

# SCHOOL LEAVERS GUIDE

2022-23

Full-time Pathways and  
Apprenticeships



# WELCOME TO ACTIVATE LEARNING

We are excited that your child is thinking about continuing their educational journey at one of our colleges.

Activate Learning is a pioneering education group committed to transforming lives through learning.

We believe everyone can improve their lives through learning; with emotional support, motivation and purpose. We are experts in delivering technical, vocational and academic education, with a high level of industry engagement and connections to some of the best-known companies—not just in our region, but in the world.

In this guide, you will learn more about the amazing opportunities available at Activate Learning and discover how we empower and support our students, helping prepare them for their chosen career pathway. Our aim is to provide your child with a complete educational experience where they feel supported and confident in their abilities and inspired by the opportunities available to them.

## Our Learning Philosophy

We transform lives through our Learning Philosophy. This is rooted on the power of the brain, the importance of emotions and feeling safe to enable learning, and motivation, so learners can understand the impact of what they are learning for their future careers.

## Supporting our students

We are proud of the support we offer to our students so they can flourish during their time at Activate Learning:

- » We support our students' physical and mental wellbeing via a dedicated Student Support team.
- » Support is available for all students including those with learning difficulties and/ or disabilities.
- » Our impartial Activate Careers team helps students make informed decisions about their future education, employment and training options. Our advisors work closely with subject tutors and progress coaches.
- » Support is available for students who need advice related to funding and bursaries.
- » We have a Head of Campus – Student Experience at each of our campuses, responsible for creating safe, vibrant and welcoming campuses for our students.

## Preparing your child for their next steps

We believe that effort and hard work are key to success, so we inspire our students to challenge themselves to achieve their best.

We instil in our students a purpose and a drive to succeed and grow, as we prepare them for life after college, whether that's higher education or employment. We work in close collaboration with different industries to help students develop the core behaviours that both universities and workplaces value.

# INSIDE

2–3	Why study with Activate Learning?
4–5	Our Learning Philosophy
6–9	Bracknell and Wokingham College
10–13	Reading College
14–15	Case study
16–17	Our employer partners
18–19	Support to succeed
20–21	Money matters
22–23	Your career routes

24–25	Levels explained
26–27	What are T Levels?
28–29	Institute of Technology (IoT)
30–31	How to apply
32–33	Case study
34–39	Career pathways
90–91	Case study
92–93	What next?

## Career pathways

**36–37** Accountancy

**38–43** A Levels and Science

**44–45** Beauty Therapy

**46–47** Business and Enterprise

**48–49** Construction

**50–51** Early Years

**52–53** Engineering

**54–55** Esports

**56–59** Foundation and Supported Studies

**60–61** GCSEs

**62–63** Hairdressing

**64–65** Health and Social Care: Clinical

**66–67** Health and Social Care: Social

**68–69** Hospitality and Professional Cookery

**70–71** IT and Computing

**72–73** Media

**74–75** Media Makeup

**76–77** Motor Vehicle

**78–79** Performing and Production Arts

**80–81** Public Services

**82–83** Sports Academies

**84–85** Sports Therapy and Exercise Science

**86–87** Tourism

**88–89** Visual Arts and Design

# WHY STUDY WITH ACTIVATE LEARNING?

Activate Learning will help you to develop the skills, knowledge, confidence and determination required to succeed in education and the workforce. Our colleges are in easily-accessible locations and contain specialised facilities that replicate the kind that you would find in the real world of work. Here, we nurture an atmosphere of independence to help you reach your goals, whatever they may be.

## STUDENT EXPERIENCE

Learn in an independent environment, make new friends, and manage a more flexible timetable.



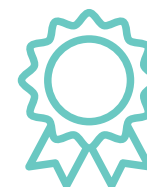
## GREAT LOCATIONS

Study at town and city-centre campuses; close to shops, restaurants, cultural hotspots, amenities, and travel links.



## HEALTH AND WELLNESS

Performance Coaches will support you in the development of emotional intelligence, wellbeing and self-confidence.



## SPECIALIST PROGRAMMES

Choose from a variety of specialist and career-focused programmes to suit you and your career goals.

## INCREASED EMPLOYABILITY



Develop the key skills required for your future career and undertake exciting work experience placements.



## PROGRESSION

Follow clearly-mapped career pathways to progress to higher-level programmes.



## EVENTS AND ENRICHMENT

Join in with students activities and go on trips and visits to support learning in a practical way.

## INNOVATIVE TEACHING

Enjoy innovative learning and assessment methods that help you develop at your own pace.





# OUR LEARNING PHILOSOPHY

## THE LEARNING PHILOSOPHY

Our award-winning Learning Philosophy is at the heart of our approach to teaching and learning. We recognise that not everyone learns in the same way or has had positive experiences of education. That's why we use tried and tested principles to engage our students and help them make the most of their time with us, setting them up with not only the knowledge they'll need for their careers, but with the personal skills that will benefit them their whole lives.

## ATTRIBUTES FOR SUCCESS

At Activate Learning, we work closely with employers to identify the characteristics and skills they are looking for in potential employees. We help you identify which of these desirable attributes you have and which you can strengthen throughout your programme, ensuring your future employability is the focus throughout your studies.

FIND  
OUT  
MORE



## CASE STUDY



The way the course was structured around the Learning Philosophy, I definitely stayed motivated. I was always able to prove that we had learned what we were studying.

When we were doing our work experience, we used an online platform to track our progress with different Learner Attributes. We had to look at them each day and it was really helpful to pinpoint what we'd learned that day."

The Learner Attributes, which is a system to build self-awareness and employment skills that all students at Activate Learning are asked to undertake, really helped Grace build her confidence, business knowledge and skills.

"The Career Pathway maps were also helpful when comparing what I would learn at City of Oxford College to other colleges and what you're learning here and what you learn in other places. You can use them to map out the continued professional development that you need to do to get to the next level at your job too.

I can see now that I am applying the practical skills I learnt at college. I'm going back over part of my project management program at the moment and using all the notes I took to help me with a business administration course I'm doing as part of my apprenticeship at Oxford Brookes!"

Grace  
Business  
Level 3





# BRACKNELL AND WOKINGHAM COLLEGE

Bracknell and Wokingham College is located in the heart of Bracknell on Church Road, just a two-minute walk from the Lexicon shopping centre.

## CHURCH ROAD CAMPUS, BRACKNELL

Bracknell and Wokingham College is located in the heart of Bracknell with train and bus stations a short, 10-minute walk away. There are also various bus stops close to the campus itself and plenty of safe, on-site bicycle parking, so however you choose to get here, it'll be safe and convenient.

Whatever your area of interest, you'll be able to study it here, with some of the best equipment and teachers available. We have many industry-standard facilities, including:

**motor vehicle and construction workshops, science labs, modern salons and beauty treatment rooms, photography and art studios, IT suites including CAD workstations and a Sport England-grade sports facility.**

Our professional, dedicated and industry-experienced teaching staff make learning fun and engaging and give you the responsibility and independence you need to take charge of your own future.

On a typical day here, in between lessons, there's space for quiet study in our Learning Resource Centre or hanging out with friends in the many spaces and communal areas. Missed breakfast or need a snack in between classes? You can grab a bite to eat or something to drink in our café or canteen. You can also visit our Harmony Salon for a variety of hair and beauty treatments.

“[It's] a really nice building to be in. I like the hubs on each floor where you can just hang out with your friends. There's a lot of space, it's nice and bright and it's just a nice place to learn in, really.”

**Zoe Woods**

A Levels



## OPEN EVENTS

Saturday 9 October 2021, 9:30am–12:30pm

Wednesday 24 November 2021, 4–7pm

Wednesday 9 February 2022, 4–7pm

Saturday 18 June 2022, 9:30am–12:30pm

For more information and to book your place, please visit [bracknell.activatelearning.ac.uk/events](https://bracknell.activatelearning.ac.uk/events)

# BRACKNELL AND WOKINGHAM COLLEGE

## STUDENTS' UNION

The Students' Union (SU) helps support and create the student experience: from running events to meeting with staff to discuss the kind of changes that impact the entire student body and college.

There is a committee of students on each campus that form the SU. Within the committee there are lots of roles. You can tell which students are in the SU because they have an orange lanyard!

The SU committee meets each week to discuss current issues, develop their campaigns and plan their events. If you don't want to be part of the committee, you can still get involved by attending the meetings, and contributing your opinion!

It's been really nice having my voice heard and actively making a student difference at college! I would recommend others join."

Bracknell and Wokingham SU member

## BEING PART OF THE SU IS A GREAT EXPERIENCE.

And can be added to your personal statement when applying to university or CV when applying to jobs!



ACTIVATE LEARNING  
Students' Union



## SUPPORT WITH TRAVEL

If you are finding it hard to meet the costs of travelling to college, you may be able to get a travel bursary, depending on your situation.

For more information on bursaries, to check if you're eligible, and how to apply, please contact our Advice and Admissions team or look on our [website](#).

## CHURCH ROAD CAMPUS

### Walk and cycle

Bracknell and Wokingham College is a 10-minute walk from Bracknell town centre. We encourage our students to cycle to college as there is plenty of safe bike parking available on-site and cycle lanes locally.

### Bus and train

If walking or cycling isn't an option, there is an excellent local bus network. The bus station is a 10-minute walk from the college and there are various stops close by. Our Woodley Hill House and Waingels Adult Centre campuses can also be easily reached by bus.

If you are taking the train, Bracknell railway station is a 10-minute walk from the campus. The station offers direct train links to Wokingham and Reading.

### Car

Bracknell and Wokingham College is situated on the Church Road roundabout in Bracknell. This campus offers limited parking, but students are welcome to park at the Bracken Walk car park. We are able to validate your parking ticket for Bracken Walk at reception at a discounted rate. Woodley Hill House and Waingels Adult Centre have free car parking on site.



# READING COLLEGE

The campus is a 15-minute walk from the town centre with fantastic local transport links, so you will be able to experience everything Reading has to offer.

## KING'S ROAD, READING

On campus, we offer the best possible facilities in a vibrant and welcoming environment. Whatever your area of study, we offer the specialist facilities you'll need to get the most out of your education and future, including creative art workshops, recording studios, performance spaces, a TV studio, theatre, garage, construction centre and fully-fitted training kitchens.

Your learning is guided by expert tutors in dedicated and well-equipped workshops and learning zones, kitted-out with the latest technology including:

**Apple TVs, Macs, PCs, iPads, laptops, and Virtual Reality headsets.**

In between lessons, you can grab a drink or a bite to eat from one of several cafes and shops on campus, have lunch with your friends in the canteen or just hang out in the chill-out areas with comfy sofas.

You can also unwind and get pampered with a variety of hair and beauty treatments at The Salon.

Reading College has a dedicated radio station called Blast 1386. With a combination of industry-standard equipment, professional management and 24/7 broadcasting, it allows students to experience running (and working in) a full-time, live-radio environment.

**"I loved it there! It was actually quite fun to be there. You'd want to actually go into college every day. There was always a lot of support there and always someone you could talk to."**

**Gabby,**

Health and Social Care Level 3



## OPEN EVENTS

Wednesday 13 October 2021, 4–7pm

Saturday 13 November 2021, 9:30am–12:30pm

Wednesday 2 February 2022, 4–7pm

Saturday 11 June 2022, 9:30am–12:30pm

For more information and to book your place, please visit [reading.activatelearning.ac.uk/events](https://reading.activatelearning.ac.uk/events)

# READING COLLEGE

## STUDENTS' UNION

The Students' Union (SU) helps support and create the student experience: from running events to meeting with staff to discuss the kind of changes that impact the entire student body and college.

There is a committee of students on each campus that form the SU. Within the committee there are lots of roles. You can tell which students are in the SU because they have an orange lanyard!

The SU committee meets each week to discuss current issues, develop their campaigns and plan their events. If you don't want to be part of the committee, you can still get involved by attending the meetings, and contributing your opinion!

I have a proper role and I feel like I am improving the college society and community. I offer a student perspective on how to improve college life, I love that my voice is heard!"

Reading SU member

## THE SU WORKS ON 'STUDENTS ORGANISING FOR SUSTAINABILITY (SOS)':

more water fountains  
and more recycling points!

# SU

ACTIVATE LEARNING  
Students' Union



## SUPPORT WITH TRAVEL

If you are finding it hard to meet the costs of travelling to college, you may be able to get a travel bursary, depending on your situation.

For more information on bursaries, to check if you're eligible, and how to apply, please contact our Advice and Admissions team or look on our [website](#).

## KING'S ROAD CAMPUS, READING

### Walk and cycle

Reading College is a 20-minute walk from Reading town centre and Reading train station. We encourage our students to cycle to college as there is plenty of safe bike parking available on-site and cycle lanes locally.

### Bus and train

If walking or cycling isn't an option, Reading has fantastic public transport options. Reading has a large bus network which offers travel across the city. Bus services run regularly along Kings Road, with stops just outside of the college. As a Reading College student, you will be able to get discounted travel on the bus.

If you are taking the train, the station is located a few minutes from the town centre. Reading's train station has connections to local areas and major cities, as well as a frequent service to London Paddington, which only takes 25 minutes.

### Car

Reading College is located on King's Road. For those wishing to drive, there is limited parking available on-site for students.



# CASE STUDY



I originally applied to do carpentry and wasn't very good at it, so I changed. I am now doing the Level 3 Professional Cookery course and have found it really good.

The course is hands-on work which I like as I work well with that style of learning. There's a lot to learn here. The teachers are all amazing and are really supportive and encouraging.

Doing this course has given me lots of opportunities. Winning the Young Risotto Chef of the Year 2021 was really encouraging. I was so shocked; I didn't think I had a chance. I learnt so much in one day with my tutor Simon Genduso, including how to prepare and present the dish properly.

Working at the Fat Duck restaurant will be really good, it's an amazing opportunity and I'm excited to see what goes on behind-the-scenes. I also work part-time at Pizza Express which is helpful to get an insight to the health and safety side of things.

I've really enjoyed my time at Reading College. If I didn't come here, I wouldn't have the same opportunities with the Chef's Academy at exclusive hotels. I've gained so much confidence being at college and would recommend this course to anyone."

"I would love to go to New York one day and work in a top restaurant as head chef or to own my own restaurant."



**Orin Perry**  
Professional  
Culinary Arts Level 3

# OUR EMPLOYER PARTNERS

At Activate Learning we focus on employability. We are passionate about making sure our students leave college not just with a qualification, but are work ready and equipped with the skills employers really want.

To achieve this, we work closely with local, regional and national businesses to gather valuable expert advice to inform our teaching and curriculum and to provide our students with the opportunity to interact with some of the best employers in the country, gaining valuable experience of work.

This includes:

- » Workplace visits or placements
- » Internships
- » Real world projects and competitions, negotiated with employers.

▶ Last year, Hospitality and Professional Cookery students took part in a competition to design a new Easter Egg with Heston Blumenthal's Fat Duck Group.

- » Employers engaging in talks/ mock interviews
- » Product demonstrations and training sessions.

▶ Last year, Beauty Therapy students worked with fake tan and cosmetic company Fake Bake to discover more about how their products work.

- » Q&A sessions.

▶ Activate Learning students were invited to attend a webinar with the British Army to find out more about roles and career options and have their questions answered live by a serving soldier.



Some of the employers we work with include:

READING MUSEUM

THAMES VALLEY POLICE

Bracknell Forest Council

BRITISH ESPORTS ASSOCIATION

In partnership with The Fat Duck Group



MAC

READING REP THEATRE

WELLA PROFESSIONALS

COMMUNITY TRUST  
Care • Develop • Educate

ROYAL NAVY

University of Reading

NHS  
Royal Berkshire NHS Foundation Trust

ARMY CADETS

Spotify



IBM

We are continually working to maintain and improve these relationships and to work with new employers to ensure our students leave us with the skills they need, and employers want.



# SUPPORT TO SUCCEED

At Activate Learning, your happiness and success is our priority. We offer the following dedicated services to ensure your time while studying with us is positive and fulfilling, both academically and personally.

## LEARNING SUPPORT

Need some additional support with your studies? Our Learning Support team offer additional and ongoing study support if you have a disability or other educational needs, including confidential 1:1 interviews and tailored learning support plans. To discuss your additional support needs, please email [gss@activatelearning.ac.uk](mailto:gss@activatelearning.ac.uk)

## COUNSELLING

Struggling with anger, stress, relationships, or something else that is bothering you and need a space to talk to someone who can help? Our counsellors can support you through your time at college. Call **01865 550401** or email [support@activatelearning.ac.uk](mailto:support@activatelearning.ac.uk)

## MENTAL WELLNESS

Anyone can struggle with poor mental health and some students may be diagnosed with mental ill health. We offer a range of services to ensure you are well supported. These include quiet spaces, self-help resources, highly trained staff and an accepting culture where we discuss mental health as equally and as openly as physical health.

## TUTORIALS

You'll have a dedicated personal tutor to coach you and keep you on track to succeed. Their frequent and friendly meetings will ensure your set targets are met and exceeded.

## PROGRESS COACHES

Progress Coaches are available to listen to you and find out how you want to progress. Together with your Progress Coach you will work on overcoming any barriers so you can develop as a person. You will work with us continuously in a weekly group session and through 1:1 coaching. These sessions allow you to focus on specific goals, improve your motivation and consider what your next steps are to break down any barriers to your personal success.

## INTERVENTION PROGRESS COACHES

Intervention Progress Coaches are also available to support you to get back on track to achieving your goals if you experience any barriers to learning throughout the year. We work with you 1:1 or in small groups on personal development areas such as confidence, organisation and stress management so you can get back to feeling your best and working to your full potential.

## ACTIVATE CAREERS

**Explore • Plan • Make it happen**

Our team of qualified, impartial careers advisers are here to help you make informed decisions about your future education, employment, and training options. We are proud of our Matrix Accreditation for the high-quality impartial information, advice and guidance offered to all our students and service users.



Working alongside your subject tutors and Progress Coaches the Careers team will help you explore your strengths and interests and to learn about the world of work.

You will have opportunities to meet with us throughout the college year through one-to-one guidance interviews, group sessions and drop-in support. You can book an appointment through your tutor or directly with the Careers team.

We will support you to gain the qualifications, employability skills, experience, and attributes to make successful applications for employment or Apprenticeships. You will benefit from a wide variety of vacancies generated via our links with local and national employers and have an opportunity to meet them at our Careers and Apprenticeship event.

## STUDENT CREW

If you are interested in working at college while you study, ask about opportunities to join our Student Crew. We've got all kinds of paid-work opportunities, and it looks great on your CV.

## SAFEGUARDING

It is everybody's responsibility to keep our campuses safe. When on campus, we ask that you wear your lanyard at all times to identify yourself and to access buildings. We have a team of safeguarding and child protection specialists if you are worried about your own or somebody else's health, safety or wellbeing, on or off campus. Call **01865 550401** or email [safe@activatelearning.ac.uk](mailto:safe@activatelearning.ac.uk)

## FAITH ROOMS

Faith rooms are available for you to use on all campuses for prayer and quiet reflection.

## TRANSITION

Coming to college can be a daunting experience for some, so we offer taster sessions, college tours, summer programmes and one-to-one support to help you adjust to college life. Call **01865 550401** or email [support@activatelearning.ac.uk](mailto:support@activatelearning.ac.uk)

## SUPPORT FOR PARENTS

We know how important it is for parents to be aware of the opportunities available to their children, as well as the support we can provide them. Visit [www.activatelearning.ac.uk/parents](http://www.activatelearning.ac.uk/parents) for more information.



# MONEY MATTERS

## FEES, FUNDING AND BURSARIES

Find out more about what you'll need to pay, if you can get any funding, and how we can help you manage it all.

### Programme fees

If, at the start of your course, you are aged 16–18 or aged 19–24 with an Education Health Care Plan, you are unlikely to pay any tuition fees for our funded programmes.

There may be additional charges for materials, trips, and kit to enhance your learning experience. These are kept to a minimum. If you are not a UK citizen, you can use the [UKCISA website](https://www.ukcisa.ac.uk) to confirm if you need to pay an 'overseas' fee.

### Manage the costs of college

A wide range of bursaries are available, subject to you meeting certain criteria, helping you with the cost of studying with us.

### What is a bursary?

A bursary provides financial support to help students overcome the specific financial barriers to be able to participate in your course. It can be used to pay for uniforms/clothing, books and other equipment for your course. The bursary can also be provided to help meet the costs of travel getting to and from your place of study and for paying for food. Bursaries don't have to be paid back and you get your bursary directly from us. Activate Learning offers several bursaries to ensure financial support reaches those students who are most in need.

### Eligibility and evidence required

You must be a 'home' student and enrolled on a funded further education course. If you are not a UK citizen, you can check if you are a home student by using the [UKCISA website](https://www.ukcisa.ac.uk)

To be eligible for our bursary's you need to meet the below household income thresholds. To assess your financial need we use household income along with individual circumstances such as the number of dependent children in the household.

- » Financial support for 16-18 students, 19+ LLDD students with EHCPs, and 2nd year students aged 19+
  - » have a household income of £25,000 or less
- » Financial support for students aged 19+
  - » have a household income of £30,000 or less

Evidence of student's household income is required for all bursaries, except for students who are Looked After or In Care who will need to provide local authority confirmation of their status.

A detailed list of all evidence required for each bursary including information regarding how we assess household income is available on the website under 'Fees, Funding and Bursaries'.

Applicants are required to apply for all statutory benefits before applying for a bursary. For further information on government benefits you are eligible for, please visit:

[www.gov.uk/benefits-calculators](https://www.gov.uk/benefits-calculators)

### What bursaries are available?

- » Travel bursary
- » Course costs bursary
- » Meal credits
- » Bursaries for young people in defined vulnerable groups (for students aged 16–18)
- » Accommodation bursary
- » Childcare bursaries

### How to apply for financial support

All student finance applications are confidential, so you shouldn't worry about applying.

Funds are limited so please apply early to avoid any disappointment, and applications will be processed on a first come, first-served basis.

The application form will only be processed if it has been completed and submitted with the required evidence so don't forget to include this with your application.

We strongly recommend that you submit your application as soon as applications open (usually July) as late applications may not be processed within our standard timescales of 4 weeks. Bursary payments will not be backdated for applications made after the start of your course.

If you need any help completing your application form, one of our Advice and Admissions Team will be happy to help you either at one of our Advice Centres on each campus, by calling **0800 612 6008** or send an enquiry via the website.





# YOUR CAREER ROUTES

The journey to career success, starts with you understanding how you prefer to learn and what interests you. Which route suits you better? Full-time study programmes or apprenticeships?

## FULL-TIME STUDY PROGRAMME

If you are looking to join us for full-time study at one of our campuses, you can expect a career-focused and innovative educational programme. The skills and knowledge you acquire during your studies with us will ensure you are prepared for your future.



### Your main qualification

Our tailored qualifications are designed in partnership with employers. Their industry insight and input ensures you gain relevant and in demand skills and knowledge.



### Work experience

You'll take part in work experience opportunities relevant to your learning programme —where appropriate—ensuring that you build the confidence you'll need when you enter the workplace.



### Industry skills and projects

You will gain invaluable workplace skills while attending industry-expert talks, taking part in employer-led and evaluated projects, and participating in mentoring and enterprise-related activities.



### English and maths GCSEs

If you join us with a Grade 3 (D) or below in GCSE English or maths, our expert teachers will help you with revision sessions to make sure you get the best possible results when you retake these subjects. Depending on your circumstances, you may be able to resit your GCSEs for free.



### Tutorial

Our tutorial programme is in place to boost your personal development, behaviour and welfare. During your tutorials you will have the opportunity to take part in enrichment activities and improve your CV.

I would definitely recommend anyone to come to here. It's a really amazing environment in which to grow. I can definitely say that I am a completely different person than when I first came here. I started here on the Level 1 Social Care and progressed my way through to Level 3.

When I started the Level 3 course, some of the previous graduates came in to talk to us about what we could expect from the course and what would be really helpful to start studying straight away. That was really great."

**Ornella, Health and Social Care, Level 3**

## APPRENTICESHIP PROGRAMME

Choosing an apprenticeship allows you to kick-start your career and gain industry-specific qualifications and experience.



### Earn while you learn

Apprenticeships offer a direct route into employment. You develop essential skills and qualifications that prove you have the knowledge and competency to complete the job, whilst getting paid for it at the same time!



### Direct links with top employers

Our apprenticeships are run by Activate Apprenticeships; a specialist provider that partners with our colleges to deliver nationally-recognised programmes. We deliver apprenticeships for over 1,000 UK businesses and work with top employers to bring great candidates and careers together.



### Clear progression routes

Apprenticeships offer clear progression routes from intermediate (Level 2) and advanced (Level 3), to higher apprenticeships (degree-equivalent qualifications) and directly into the workplace.

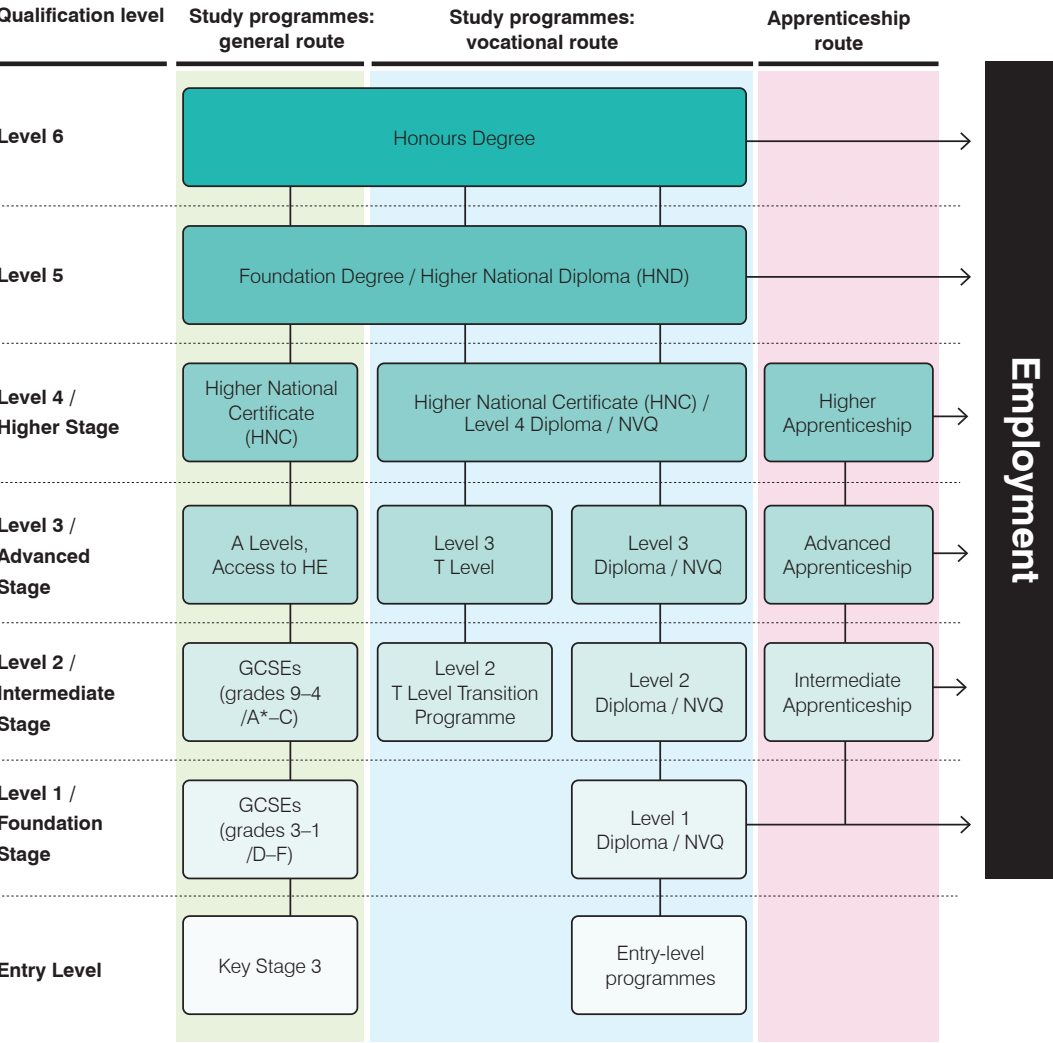


### How does it work?

As an apprentice, you are employed and paid by the company you work for. You usually spend one or two days a week at college, studying core skills such as English, maths and IT. Some apprenticeships may be delivered entirely in the workplace and will be monitored by our dedicated accessors routinely. Apprenticeship opportunities are available all year-round and last for a minimum of one year.

# LEVELS EXPLAINED

Programmes in this guide are arranged according to levels. Levels refer to learning stages, and guide you through our career pathways maps.



Further education college programmes typically run from Level 1 (Foundation Stage), to Level 2 (Intermediate Stage) and Level 3 (Advanced Stage). Level 3 programmes are equivalent to three A Levels, and ensure you have the points required to progress to higher education. At Activate Learning, we also offer university-level programmes and qualifications across our colleges.

If you have not gained five GCSEs at grade 9–4 (A\*–C equivalent), you can still progress in the career pathway that interests you. We will work with you to make sure you join the right programme at the right learning stage; ensuring you have every opportunity to progress.

The graphic shows how the levels referred to in this guide relate to different stages of learning.





# WHAT ARE T LEVELS?

Technical Levels (T Levels) are a new qualification equal to three A Levels. Available to school leavers after they have completed their GCSEs, T Levels offer an alternative to A Levels.

The difference between a T Level and an A Level is that with a T Level, 80% of the course is in the classroom, learning the skills that employers need. The other 20% is a meaningful industry placement, where you'll put these skills into practice.

T Levels have been designed in collaboration with employers and businesses so that you will learn key skills to prepare you for the workplace. The qualification will offer you much more practical experience through completion of an industry placement. No qualification currently available will offer you this except for apprenticeships.

In fact, as part of your T Level education, you will do more than 315 hours of industry placements over the course of your two-year programme.

Each T Level includes the following compulsory elements:

- » A technical qualification, which will include:
- » Core theory, concepts and skills for an industry area
- » Specialist skills and knowledge for an occupation or career
- » An industry placement with an employer
- » A minimum standard in English and maths, if students have not already achieved them

Once you complete your T Level, there are several options that are available to you. These include moving into full-time employment, an apprenticeship or higher education.

To help T Level students get into higher education, UCAS tariff points have been allocated to T Levels, which means they will be equivalent to three A Levels.

UCAS points will only be allocated to the overall T Level grade, so you must achieve at least an overall pass grade to receive UCAS points.

UCAS tariff points	T Level overall grade	A Level equivalent
168	Distinction*	A*A*A*
144	Distinction	AAA
120	Merit	BBB
96	Pass (C or above on core component)	CCC
72	Pass (D or E on core component)	DDD

Whether you are a prospective student, parent or employer partner, you can find out more about T Levels:

- » Read more about T Levels on the government website [tlevels.gov.uk](https://tlevels.gov.uk)
- » Search on YouTube for the Department for Education's T Level videos
- » Visit the National Careers Service website for information and guidance on all post-16 options [nationalcareers.service.gov.uk](https://nationalcareers.service.gov.uk)
- » Speak to the careers advisor at your school
- » Register for an upcoming Open Event at the college, where you can speak to our teaching staff face-to-face about T Levels

**T-LEVELS**  
THE NEXT LEVEL QUALIFICATION

## T LEVELS WITH ACTIVATE LEARNING

### WHAT T LEVELS ARE AVAILABLE AND WHEN DO THEY START?

T Levels went live at Activate Learning in September 2021 and are currently available in the following areas

#### T Level Health - Adult Nursing

This course starts with the essential knowledge and skills to work in healthcare, including how the industry works, core scientific concepts and key regulations including managing information, health and safety and good scientific/clinical practice. There is also an Employer set project.

The T Level is designed to prepare you for entry to University study (for example Nursing or other Allied Health Professions), or entry directly into employed roles such as the Nurse Associate Higher Apprenticeship with local NHS Trusts.

#### Digital Production, Design and Development

This course focuses on the digital industry and aims to give you the essential knowledge, understanding and skills relevant to any digital occupation. There is also an Employer-set project.

Learn the essentials behind all digital roles by understanding data and digital systems, how software and businesses interact, security, testing, planning and legal issues. You then build on this by developing specialist skills in understanding user needs and designing and developing digital systems.

This type of qualification is ideal for people who want to work in the following areas:

- » Digital development
- » Project planning and management
- » Computing systems management
- » Software development
- » Security

**More T Levels subjects will be offered from September 2022, please check our website for more details.**

#### T Level Transition Programme

If you would like to start a T Level in 2023 and want to prepare for it, we offer the following transition programmes. These programmes are a Gateway to Level 3 and will ensure you are all set and have a clear understanding of the work involved, as well as guaranteeing you an interview for your chosen T Level at the end of the year.

- » Business
- » Health
- » Digital
- » Engineering
- » Animal Management
- » Hair and Beauty
- » Professional Catering
- » Furniture
- » Media

FIND  
OUT  
MORE



# BE ANYTHING READY.

## SOUTH CENTRAL INSTITUTE OF TECHNOLOGY DIGITAL PATHWAYS

Welcome to the South Central Institute of Technology. Choose a qualification with us, uncover your potential, and prepare yourself for employment now - and in the future.

### WHO ARE WE?

We are the South Central Institute of Technology - providing higher level technical qualifications for a new generation of digital visionaries.

In a time where the world and careers are shifting, keeping up has never been more important. As a project working with a consortium of world-leading brands including Microsoft, KPMG, McAfee, Milton Keynes College, and Cranfield University - we're always one step ahead of the game.

As a hub of innovation and world-leading technological advancements, we have relentless dedication to future-proof the lives and skills of learners. At South Central IoT, you can be anything ready.

### WHAT ARE INSTITUTES OF TECHNOLOGY?

Institutes of Technology have been designed to create higher level technical qualifications, in partnership with employers to increase productivity and raise the standards of university level technical education. At Activate Learning, our colleges in Oxford (Technology Campus) and Reading will be home to the South Central IoT.



### YOUR OPTIONS

What qualifications can you complete with us?

#### HIGHER NATIONAL CERTIFICATE

A Higher National Certificate (HNC) is equivalent to the first year of university level study, delivered full time in one year or part time over two years. A HNC can allow progression onto a Higher National Diploma. You may also hear this being referred to as a Level 4 qualification.

#### HIGHER NATIONAL DIPLOMA

A Higher National Diploma (HND) is equivalent to the second year of university level study and can be delivered full time or part time. If you have already completed a HNC in a relevant subject, you can apply directly for the HND. You may also hear this being referred to as a Level 5 qualification.

#### HIGHER APPRENTICESHIP

Higher Apprenticeships are work-based programmes which include the study of a recognised Level 4 or 5 qualification.

### HOW TO APPLY

The easiest way to apply is through our website - [southcentraliot.ac.uk](https://southcentraliot.ac.uk)

Simply choose the qualification or course you wish to apply for and follow the process. Then, you just have to submit your details and wait to be offered an interview - it's as easy as that.

### GET IN TOUCH

 @SouthCentralIoT

 @SouthCentralIoT

 @SouthCentralIoT

 South Central IoT

 South Central Institute of Technology



# HOW TO APPLY

If your heart is set on a specific subject pathway or apprenticeship, you are probably ready to apply.

## APPLYING FOR A FULL-TIME STUDY PROGRAMME?

For full-time subject pathways, please first complete an online application form. This can be done on our website at [bracknell.activatelearning.ac.uk](http://bracknell.activatelearning.ac.uk) and [reading.activatelearning.ac.uk](http://reading.activatelearning.ac.uk). Application forms can be supplied in alternative formats. Please speak to a member of the team at any campus or call **0800 612 6008** for more information.

As soon as we get your application, our Advice and Admissions team will confirm they have received it and let you know what your next steps will be. Depending on the information you provide us, the next step may be an offer from us to join your subject pathway and an invitation to join an Activation Programme. An Activation Programme is a series of activities that you'll need to complete to confirm that the pathway, the course, the level, and the college are the right fit for you. Activities can include initial assessments, welcome/discovery days, introductions to our Learning Philosophy, talks about life at college, what support is available including student finance, and support with advanced learner loans.

If you have further questions regarding your study programme, call us on **0800 612 6008** or contact us online at [www.activatelearning.ac.uk/contact-us/enquiries](http://www.activatelearning.ac.uk/contact-us/enquiries)

## APPLYING FOR AN APPRENTICESHIP?

Please search through our latest vacancies online at [www.activateapprenticeships.co.uk](http://www.activateapprenticeships.co.uk). You can also register for alerts as new vacancies arise.

Once you find an apprenticeship that interests you, apply online. We will invite you in for an interview to check that the programme is right for you and that you will be able to achieve the qualification.

You will also complete an initial assessment for basic literacy and numeracy.

You must be employed before you start your apprenticeship, but don't let that stop you from applying as we can help you in your job search. If you've already found an employer, or your current employer wishes to enrol you on an apprenticeship programme, please contact us and we will work with them.

If you have further questions regarding your apprenticeship application, please do get in touch. Contact us online at [www.activateapprenticeships.co.uk/contact](http://www.activateapprenticeships.co.uk/contact) or call **01865 551015**.

## THE KEY SECTIONS OF YOUR APPLICATION FORM

### Section 1 About yourself

Add your emergency contact details so we can contact your guardian (or designated contact if you're 19+) in an emergency.

### Section 2 Your programme choice

Please write your programme title in as much detail as possible (including level etc).

### Section 3 Your future plans

Tell us why you want to do this programme, how it fits with your career plans, and what you believe you can bring to the college.

### Section 4 Extra support for you

We offer support to succeed for all our students. If you have a disability, medical condition, or learning or language support needs, tell us as soon as possible; ideally on the application form. This is confidential and will be used to get the support you need in place for when you join us.

# CASE STUDY

**//** I did Media GCSE and I really enjoyed it but my sixth form didn't provide a full Media course. They did Media A Level but I wanted something a bit more practical.

The facilities here are the best out of all the colleges that I visited. They have the nicest studio and a green screen plus all the equipment they have is a lot better than what was available elsewhere.

The teachers are really welcoming and super enthusiastic about the course. They're approachable and very supportive if you need help. At the same time, I like the fact that they give you a lot of independence and freedom which is quite different to secondary school."

"My favourite part of the course is the practical sessions in the studio. There, we are let loose with the cameras. Our teachers give us a quick brief and then we get to practice using the camera, microphones and all the other equipment. It's so much fun!"

A young woman with long brown hair, wearing a grey cardigan over a white top and a blue lanyard, is smiling and holding a black JVC video camera. The background is a blurred outdoor scene with yellow and blue geometric shapes overlaid on the image.

**Erin Brodrick**  
First Year Media,  
Level 3





# CAREER PATHWAYS



**This is the ideal entry point into a rewarding career as an entrepreneur or roles in finance, HR or marketing. Gain practical know-how and make connections on industry placements in your chosen sector two days per week throughout your programme.**

There are around six million private businesses in the UK, more than 99% of which are small or medium-sized businesses. The number of businesses registered in the UK has increased on average by 3% per year over the past 20 years. With nearly 178,000 annual openings for new jobs, organisations are searching right now for skilled team members and decision-makers within a variety of different business functions.

There are significant employment opportunities in this sector, with the number of business-related roles across England forecast to rise by approximately 150,000 in the next seven years.



**You don't need a business or a financial degree to get into accounting. If you enjoy working with numbers and are looking for a varied, stable and well-paid job then get an Association of Accounting Technicians (AAT) qualification in accountancy with Activate Learning!**

Accountancy can be a very diverse career. You can train in business, practice or banking and once qualified, accountants can be found in high-level positions all over the world! There are various specialisations, such as consulting, corporate finance and forensic accounting.

With us, you'll get AAT-approved programmes that lead to professional bookkeeping status; developing your core skills in business administration, boosting your employability, and supporting your progression into higher education, if this is your intended route.

**If you want to work as a professional accountant, we offer a pathway that combines two advanced stage qualifications:**

- » AAT diploma for Accounting Technicians
- » a diploma in Business, Accountancy Pathway

**As part of your studies, you will also have access to:**

- » the latest version of Sage software
- » computer rooms
- » study spaces
- » the opportunity to purchase discounted laptops through our partnership with Academia

80,000

THERE ARE NEARLY 80,000 JOB OPENINGS ANNUALLY ACROSS THE ACCOUNTANCY AND FINANCE PROFESSION IN ENGLAND.



Since I've been looking for a new job in accountancy, I've really come to realise that the qualification I've got covers so much of what people are looking for. The course was designed with the help of local employers, but now I can really see that I've been given exactly the skills and knowledge that people are looking for in the job market."

**Carly, AAT Level 3**

Read Carly's full story online at [reading.activatelearning.ac.uk](http://reading.activatelearning.ac.uk) or [bracknell.activatelearning.ac.uk](http://bracknell.activatelearning.ac.uk)

FIND OUT MORE ABOUT THIS PATHWAY AT **READING**

AVAILABLE AT LEVELS: ▶

ADVANCED  
**L3**

INTERMEDIATE  
**L2**



Make a fresh start with your learning in our safe and engaging campus and gain more independence and autonomy over your learning. Here, you're encouraged and supported to create and manage your own schedule and with loads of subjects to choose from, our enthusiastic tutors can help you pick the areas to study to get you closer to your goals.

During your studies with us, you'll gain the skills, knowledge and attributes you need to make a success of your next step, whether that's university, an apprenticeship or entering work.

Every year, hundreds of our students go on to study higher-level programmes at almost 100 top universities across the UK and abroad. Recently this has included 18 of the world-class Russell Group's 24 universities, such as University of Oxford, Newcastle University and King's College, London.



## A LEVELS

A Levels are more than just a continuation of your time at school. Studying A Levels at one of our colleges gives you the opportunity to specialise in the subjects that interest you the most. That means you'll be taking responsibility for your own study; with our help, you can identify your interests and strong points and think about your next steps after college.

You'll also be keeping your options open: A Levels are versatile, internationally-recognised qualifications that are highly valued by employers and can help you gain entry to any university in the country. All A Levels, no matter the subject, will help you improve your communication skills and prove that you are capable of high-level academic work. So, if you haven't decided yet on a career or further study, A Levels can help you keep your options open. During your time with us, we'll also help you to pursue additional activities, both to broaden your skills and prepare yourself for life after college. Some students take up internships during the summer.



There's a good balance of practical and theory work on the course and they make sure to break it up so it's not continuous theory. At college they take it above and beyond and you get proper practical experience.

You learn so much, it's not just education, you build yourself up as well. Even though you're studying a certain subject, you learn about yourself and your skills, it's a fantastic overall experience."

### Lilly, Forensic Science Level 3

Read Lilly's full story online at [reading.activatelearning.ac.uk](http://reading.activatelearning.ac.uk) or [bracknell.activatelearning.ac.uk](http://bracknell.activatelearning.ac.uk)

FIND OUT MORE ABOUT THIS  
PATHWAY AT **READING**

FIND OUT MORE ABOUT THIS  
PATHWAY AT **BRACKNELL**

## SCIENCE

You can pick a choice of three A Levels from our business, science, communication, and social sciences pathways. See overleaf to view full subject choices of our Oxfordshire locations.

If you are focused on a career in science, our full-time science programmes offer you the opportunity to specialise in applied science, forensic science, or applied psychology; providing the equivalent points for university progression.

### As part of your studies, you will also have access to:

- » laboratories with expert technician support
- » dedicated study spaces
- » IT suites and computer facilities
- » the opportunity to purchase discounted laptops through our partnership with Academia
- » highly-qualified, specialist teachers



# A LEVEL PROGRAMMES

BRACKNELL AND WOKINGHAM COLLEGE

## ADVANCED STAGE PROGRAMMES

You can choose three A Levels from within one of the pathways listed below.

Each pathway will enable you to progress with your future career. When you complete your programmes, you can go on to further study at university or college, progress directly into employment, or undertake an apprenticeship.

### Business

- » Accountancy
- » Business
- » English Language and Literature
- » Law
- » Maths
- » Politics
- » Psychology
- » Sociology

### Communication

- » English Language and Literature
- » History
- » Photography
- » Psychology
- » Sociology

### Science

- » Biology
- » Chemistry
- » Further Maths
- » Maths
- » Physics
- » Psychology

### Social sciences

- » Business
- » English Language and Literature
- » History
- » Law
- » Politics
- » Psychology
- » Sociology

FIND OUT MORE ABOUT THIS  
PATHWAY AT **BRACKNELL**



# A LEVEL PROGRAMMES

READING COLLEGE

## ADVANCED STAGE PROGRAMMES

You can choose three A Levels from within one of the pathways listed below.

Each pathway will enable you to progress with your future career. When you complete your programmes, you can go on to further study at university or college, progress directly into employment, or undertake an apprenticeship.

### Business

- » Business
- » English Language and Literature
- » English Literature
- » History
- » Information Technology
- » Law
- » Maths
- » Politics
- » Psychology
- » Sociology

### Communication

- » Art and Design
- » Drama and Theatre Studies
- » English Language and Literature
- » English Literature
- » History
- » Media
- » Philosophy and Religious Studies
- » Psychology
- » Sociology

### Science

- » Biology
- » Chemistry
- » Further Maths
- » Geography
- » Information Technology
- » Maths
- » Physics
- » Psychology

### Social sciences

- » Business
- » English Language and Literature
- » English Literature
- » Geography
- » History
- » Law
- » Politics
- » Psychology
- » Sociology

FIND OUT MORE ABOUT THIS  
PATHWAY AT **READING**

# SCIENCE PROGRAMMES

BRACKNELL AND WOKINGHAM COLLEGE AND READING COLLEGE

## ADVANCED STAGE PROGRAMMES

The following BTEC programmes are equivalent to A Level study, enabling you to gain the sufficient UCAS points needed for your university application and undergraduate study.

---

Forensic Science BTEC Level 3 Extended Diploma

---



---

Applied Science BTEC Level 3 Extended Diploma

---



---

Applied Psychology BTEC Level 3 Extended Diploma (Reading College only)

---

## ACCESS TO HIGHER EDUCATION PROGRAMMES

If you are aged over 19 and looking to gain the qualifications to progress on to university, you may look to undertake an Access to Higher Education programme. An alternative to A Levels, the course is one-year in duration, has funding available and is designed exclusively for adults.

Find out more on our Adult Education website:  
**[adult.activatelearning.ac.uk](http://adult.activatelearning.ac.uk)**





By choosing a career in this industry, you will have the opportunity to combine creativity with customer care; helping people to look and feel great.

Beauticians are specialists in discussing and understanding client requirements, analysing and advising on skincare and beauty regimes, giving treatments, and applying cosmetics. Completion of a Beauty Therapy diploma can lead to job roles such as beauty therapist, spa manager, salon manager and dermatology specialist, to name a few.

This industry is particularly strong, with nearly **£2 billion a year** spent on beauty treatments. Forecasts also predict that between 2020 and 2025, the increase in jobs for beauticians and related roles in England are set to see a 4% increase, which is much higher than the overall job market.

Beauty salon managers and proprietors, along with their hairdressing counterparts, make a big contribution to the economy of South East England. Much higher than their counterparts elsewhere in the UK contribute to their own respective areas.

**Don't just learn about it, be about it! As part of your programme you will undertake 60+ hours of work experience per year, including working within our on-campus salons.**

You will have the opportunity to build the foundation of your professional experience within our on-site training salons before testing your skills with paying clients. You will also visit other local salons, attend masterclasses, visit trade exhibitions, and take part in competitions to boost your skills, knowledge and creativity. Previous students on this programme also had the opportunity to travel to Thailand and complete a qualification in Thai massage!

Alongside learning about how to apply beauty treatments, you'll also learn about the human body. This will help you to better understand the effects of the treatments and develop your technique.

Every year, we successfully train many students in becoming fully-qualified beauty therapists. We will help you develop the skills you need to work in the beauty therapy industry, including:

- » communication
- » problem solving
- » professional standards
- » client consultation
- » time management
- » customer care
- » creativity

**£1.7 BILLION**

IN THE UK, PEOPLE SPEND ABOUT  
£1.7 BILLION A YEAR ON BEAUTY  
AND HOLISTIC TREATMENTS



When I came to the Open Event, the tutors were really supportive and gave me all the information that I needed. That's what swayed me: they seemed very positive.

"College is an experience that I think everyone should have. It's not like school; you are treated like an adult. You are treated as your own person and not as a whole class together. You're not in that sterile environment; you make your own choices."

**Lauren, Beauty Therapy Level 3**

Read Lauren's full story online at [reading.activatelearning.ac.uk](https://reading.activatelearning.ac.uk) or [bracknell.activatelearning.ac.uk](https://bracknell.activatelearning.ac.uk)

FIND OUT MORE ABOUT THIS  
PATHWAY AT **READING**

FIND OUT MORE ABOUT THIS  
PATHWAY AT **BRACKNELL**

ADVANCED

**L3**

INTERMEDIATE

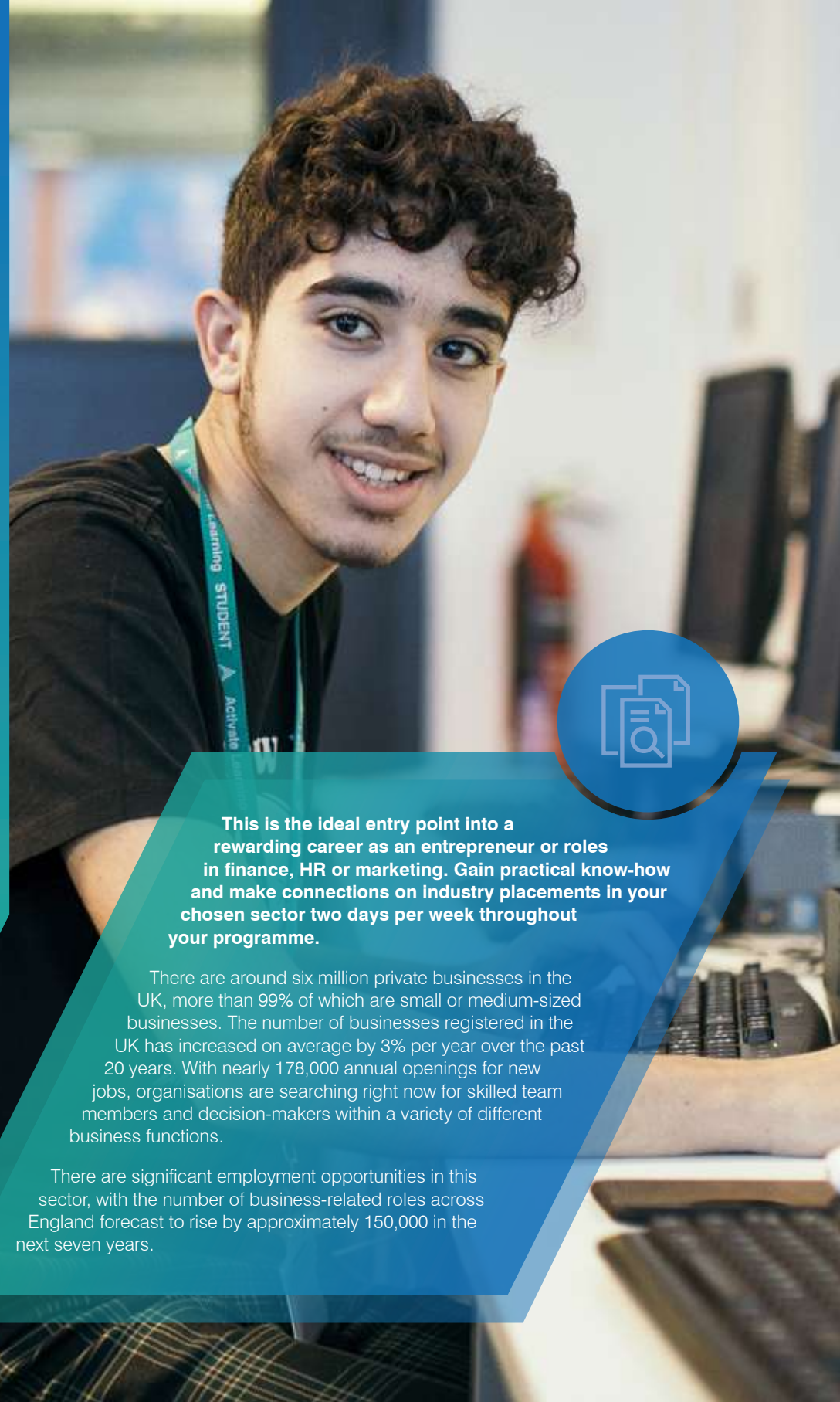
**L2**

FOUNDATION

**L1**

AVAILABLE AT LEVELS: ▶





This is the ideal entry point into a rewarding career as an entrepreneur or roles in finance, HR or marketing. Gain practical know-how and make connections on industry placements in your chosen sector two days per week throughout your programme.

There are around six million private businesses in the UK, more than 99% of which are small or medium-sized businesses. The number of businesses registered in the UK has increased on average by 3% per year over the past 20 years. With nearly 178,000 annual openings for new jobs, organisations are searching right now for skilled team members and decision-makers within a variety of different business functions.

There are significant employment opportunities in this sector, with the number of business-related roles across England forecast to rise by approximately 150,000 in the next seven years.

If you're looking to start your career sooner rather than later, qualifications in business are flexible and are considered valuable across many industries. On this pathway, we focus on developing your employability; equipping you with the skills to become an effective team player in organisations ranging from small business start-ups to global corporations.

If you have an entrepreneurial flair, find out how you could turn your passion and ideas into a business reality. With our business and enterprise pathway, you will apply your learning to the real world, working on projects and assignments that challenge you, while developing the soft skills that employers are looking for.

As part of your studies, you will have the opportunity to take part in employer-led student projects with local companies and organisations. Recent projects have included planning and delivering a fundraising programme for a local hospice, designing a new young persons' travel scheme for a local bus company, and developing a brand strategy for a national charity.

By working with external organisations and employers, you will get a real flavour of the realities of working in business.

You will hear from guest speakers on a range of areas and you will also take part in work experience throughout your programme, helping you build the skills and confidence to launch your career.

▶ Apprenticeships are available within this pathway

5 MILLION

THERE ARE JUST UNDER 5 MILLION JOB ROLES IN BUSINESS MANAGEMENT ACROSS THE UK. BY 2027, THAT'S FORECAST TO INCREASE A FURTHER 2.6%!



I always just wanted to get into a job and start earning. With business, I think you can get into a career quite quickly and start learning on the job and progressing in your career that way. At college, I was really able to figure out what aspects of business I didn't enjoy and which parts I did. I really didn't like the finance side of things, but I really liked Human Resources, so that's why I chose the HR route as a potential career. At the interview for college, we went over the Career Pathways that were available and what you do year by year, and then at the end of the first year you choose a particular route."

**Grace, Business Level 3**

Read Grace's full story online at [reading.activatelearning.ac.uk](https://reading.activatelearning.ac.uk) or [bracknell.activatelearning.ac.uk](https://bracknell.activatelearning.ac.uk)

FIND OUT MORE ABOUT THIS PATHWAY AT **READING**

FIND OUT MORE ABOUT THIS PATHWAY AT **BRACKNELL**

\*Available at other Activate Learning colleges

AVAILABLE AT LEVELS: ▶





**Get out from behind a desk and work on varied construction projects, finishing each day with results you can see and touch.**

Our programmes focus heavily on the practical elements of learning: working in industry placements and practicing in our college's excellent facilities. As well as deepening your knowledge of the construction industry, you will develop the expertise and knowledge required to enter the industry at an advanced stage, or to progress to university to prepare for a career in construction management. The sector is well paying and there are opportunities to progress from an apprenticeship to self-employed trade specialist, or a project-manager role in a multi-national company.

Whether your skills and interests would match with being a carpenter, plumber, electrician, site foreman or surveyor, our teachers have years of experience within construction and will share with you the knowledge and expertise you need to succeed. What's more, our students get to work on employer-led projects which reflect the real-life challenges construction companies face every day.

The sector pays well and there are opportunities to progress from Activate Learning to wherever your heart takes you; from a self-employed trade specialist, to a project-manager role at a multi-national company!

Whatever your skills and interests, our teachers have decades of combined experience within construction and will share with you the knowledge and expertise you need to succeed.

**Apprenticeships are available within this pathway**

3%

3% GROWTH IS EXPECTED IN THIS SECTOR ACROSS ALL THE KEY JOB ROLES—IN PARTICULAR PLUMBERS, ELECTRICIANS AND MANAGERS—UP TO 2025.



**The wider construction sector—including contracting, materials manufacturing, and associated professional services—employs around 3.1 million people, which equates to roughly 9% of the UK workforce.**

One of the reasons for the strength of this industry is that the roles can be so varied, yet they are all crucial to construction projects, whether large or small. Plumbers and electricians are necessary to install systems and carry out repairs, carpenters and construction workers interpret designs and create structures, site foremen supervise teams and architects design and develop specifications for buildings. The construction industry offers a wealth of career opportunities to progress into once you gain your qualification.



I've found that I've made quite a few friends here, and the facilities here are so much better than anywhere else. I've been treated more like an adult here."

"When I attended an Open Event, I visited the plumbing workshop and was so impressed with the facilities I felt in my element straight away. One of my favourite parts of the programme has been having hands-on experience of using and assembling different materials in the workshop."

**Sherrie, Plumbing Level 2**

Read Sherrie's full story online at [reading.activatelearning.ac.uk](http://reading.activatelearning.ac.uk) or [bracknell.activatelearning.ac.uk](http://bracknell.activatelearning.ac.uk)

FIND OUT MORE ABOUT THIS PATHWAY AT **READING**

FIND OUT MORE ABOUT THIS PATHWAY AT **BRACKNELL**

\*Available at other Activate Learning colleges

AVAILABLE AT LEVELS: ▶

HIGHER  
L  
4-7\*

ADVANCED  
L3

INTERMEDIATE  
L2

FOUNDATION  
L1



**If you want to work in the early years sector, this pathway provides you with a clear route into this rewarding industry.**

Our programmes combine theoretical study in college with significant practical experience, preparing you to work competently, safely and effectively with children and their families in a wide range of environments.

You will be expected to attend work placements in a variety of settings for two days per week, which will build to a total of up to 650 hours of experience every year. During work placements you will gain the confidence to plan and evaluate activities and develop excellent observation skills. Experience is a key feature that employers look for and your time spent on work placements will be invaluable in putting you ahead of the competition!

Throughout your programme, you will also get opportunities to go on trips, follow projects set by employers and take part in employability events such as mock interviews, job fairs and CV-writing sessions.

We have links with West Berkshire Family Hub where students are offered the opportunity to lead creche sessions and take responsibility for the care and learning of children.

**Apprenticeships are available within this pathway**

**7 MILLION**

OVER SEVEN MILLION CHILDREN UNDER 10 YEARS OLD IN ENGLAND USE FORMAL CHILDCARE



I would definitely, 100% recommend this programme, particularly if you don't get on with school. If you are struggling, then college is great because it offers so many different opportunities at different levels. If you haven't got all your GCSEs, then you could still go on to a lower-level course, doing something that you love, then move up, so you're still doing something you enjoy. College is more hands on. At school, a lot of the study is writing and reading, but at college it's really practical. We get to do all the activities that we plan and test them to see if they work. It's really fun!"

**Amelia, Early Years Level 3**

Read Amelia's full story online at [reading.activatelearning.ac.uk](https://reading.activatelearning.ac.uk) or [bracknell.activatelearning.ac.uk](https://bracknell.activatelearning.ac.uk)

FIND OUT MORE ABOUT THIS PATHWAY AT **READING**

FIND OUT MORE ABOUT THIS PATHWAY AT **BRACKNELL**

Working in the early years sector involves supervising play and other activities for pre-school age children, as well as assisting teachers and caring for children in day or residential nurseries, children's homes and private households.

The demand for childminders and those working in pre-school environments is increasing following the introduction of 30 funded hours per week for three- and four-year-olds of working parents in 2017.

In South East England, there are over 50,000 job roles and over 2000 openings per year for child development and well-being roles. In the South East England, job roles in this sector are 9% above the national average.



HIGHER  
**L  
4-7\***

ADVANCED  
**L3**

INTERMEDIATE  
**L2**

FOUNDATION  
**L1**

\*Available at Bracknell and Wokingham College

AVAILABLE AT LEVELS:



From aerospace to agriculture, food packaging to pharmaceuticals, and everything in between, organisations in those industries, from micro-SMEs to large, multi-national companies need the services of skilled engineers. So much so, that as of 2021, there are 1.36 million job roles and 44,000 openings per year in the Engineering sector across the UK. This sector is especially important in South East England, with 6% more job roles in the region compared to the UK average.

Engineers are always in demand and are successfully employed or self-employed across the private, public, and not-for-profit sectors. In fact, as of 2021, 18% of the UK working population works in engineering, and at least 15% of the working population in every region are in engineering jobs.

**Follow our engineering pathway and you will get an excellent grounding in mechanical, electrical and electronic engineering to enable you to choose the career that's right for you.**

Following recent investments in our engineering facilities you'll benefit from completing your diploma in state-of-the-art learning zones, high-quality workshops, modern design and fabrication spaces. Using different machining processes, thanks to lathes, milling machines and various other specialist tools being in the workshop, you'll gain practical experience of processes that you may do in the future.

As part of your studies, you will also have the opportunity to take part in employer-led, work-based projects, based on real-life scenarios, providing invaluable experience to supplement your studies.

Level 3 students have recently benefitted from curriculum sponsorship from Royal Electrical

Mechanical Engineers (REME), including a work-based project, guest lecturing and regional competitions.

**Teaching and learning are provided with the support of leading engineering companies, including:**

Peter Brett Associates (now part of Stantec), Royal Electrical Mechanical Engineers (REME), BMW, Skanska

**Apprenticeships are available within this pathway**

**1.36 MILLION**

THERE ARE 1.36 MILLION JOBS AND 44,000 OPENINGS PER YEAR IN THIS SECTOR.



The facilities like the engineering workshops are awesome and the teachers have been really supportive.

My favourite part about my course is getting to go on the workshops. When you're there, you're left to get on with it and the teachers really encourage independence which has helped me prepare for the workplace."

### Cameron, Engineering Level 3

Read Cameron's full story online at [reading.activatelearning.ac.uk](https://reading.activatelearning.ac.uk) or [bracknell.activatelearning.ac.uk](https://bracknell.activatelearning.ac.uk)

FIND OUT MORE ABOUT THIS PATHWAY AT **READING**

FIND OUT MORE ABOUT THIS PATHWAY AT **BRACKNELL**

\*Available at Reading College

AVAILABLE AT LEVELS: ▶

HIGHER  
L  
4-7\*

ADVANCED  
L3

INTERMEDIATE  
L2



**In 2021, the global video game industry's worth is predicted to rise above £97 billion. Just as in professional sports, there are a multitude of industries that have now grown around video games' popularity to form a multi-faceted economy.**

In esports, the roles are as varied as they are numerous. On this pathway, you could find a rewarding career in areas such as journalism, law, events management, marketing, broadcasting, and many more!

The UK has the largest video games sector in Europe and it employs around 47,000 professionals directly, and indirectly, across related industries (such as esports). Although London is the leading region in the UK for gaming, unlike other creative industries, this sector's regional contribution is significant across the UK, meaning you can find employment across Britain. For example, more than half of all jobs in film are in London. For games, however, that figure is just 28%. The South East has 23% of vacancies in games.



**The qualifications we offer on this pathway will enable you to enter careers in the esports industry, or it could give you the opportunity to upskill and progress your burgeoning esports career!**

Upon graduation, you could then apply for higher education or foundation degrees within the esports, sport, business, and leisure industries.

You will also develop the soft skills that are valuable to all employers and will benefit you throughout your life too: strategising, teamwork, and effective communication, among others.

Unlike for many other industries, the COVID-19 global pandemic was beneficial for this sector. It propelled esports into the mainstream, with Premier League stars participating in competitive FIFA tournaments and F1 drivers regularly streaming iRacing on Twitch.

Former footballer David Beckham is even getting in on this blossoming industry with a sizeable minority stake in Guild Esports team, which is looking to develop a pipeline of gaming talent in the UK.

**£10 BILLION**

**THE UK HAS THE LARGEST VIDEO GAMES SECTOR IN EUROPE. ITS PREDICTED VALUE IS £10 BILLION BY 2023.**



**FIND OUT MORE ABOUT THIS PATHWAY AT [READING](#)**

**AVAILABLE AT LEVELS:**

ADVANCED

**L3**

INTERMEDIATE

**L2**



## FOUNDATION STUDIES

**Our foundation programmes meet the needs of a broad range of learners, allowing for progression onto vocational career pathways within Activate Learning.**

We offer a variety of vocational pathways, including:

Business	IT	Sports
Construction	Media	Tourism
ESOL	Motor vehicle	Visual arts and design
Hair and beauty	Performing arts	
Hospitality and professional cookery	Public services	

During the one or two-year programme, learners are able to try different vocational options or specialise in a chosen subject area. Our students also develop employability skills and continue their studies in English, maths and digital literacy where required. The programme includes citizenship and personal and social development, as well as work experience opportunities.

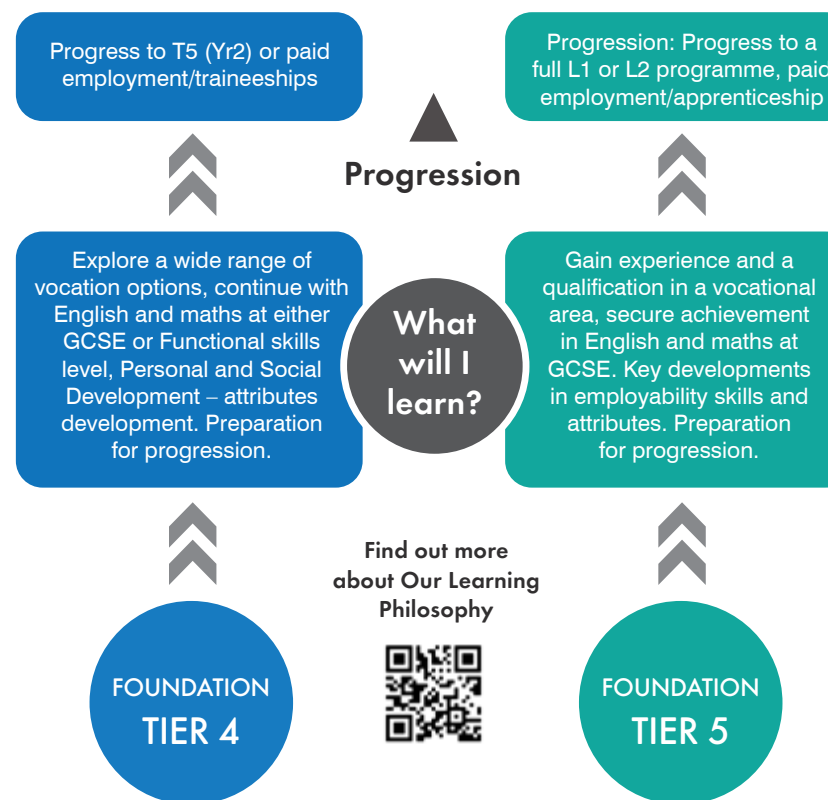
### FOUNDATION STUDIES

Our Foundation Programmes meet the needs of a broad range of learners; from those with special needs or disabilities to those who may have disengaged from learning in the past or not achieved their full potential.

We will provide you with the opportunity to develop vital employability and independence skills through a hands-on learning programme. Lasting one or two years, our vocational programmes are designed to engage our learners, whilst focusing on the skills required for further progression on one of our pathways or into employment.

We offer you the opportunity to develop through a wide range of vocational pathways, as well as the chance to upskill in English and Maths qualifications. You will also gain essential attributes for employment, as well as developing your personal and social skills.

For those learners wishing to progress in their studies, we offer taster sessions on Level 2 programmes to help support your progress and confirm your next steps.



FIND OUT MORE ABOUT THIS PATHWAY  
AT **READING** OR **BRACKNELL**



# SUPPORTED STUDIES

We offer a variety of supported studies programmes for learners who require additional support and who may have Education and Health Care Plans (EHCPs). Furthermore, we know that every learner is different, so we design the right blend for each individual's needs.

## OUR FACILITIES AND SPECIALIST SERVICES

Our SEND provision is at the heart of our colleges at Activate Learning. We believe that our learners can achieve anything with the right support, time and environment. At each of our campuses, every student will be allocated an experienced personal tutor who will:

- » support attendance
- » set targets and goals
- » help with study skills
- » raise awareness of health issues
- » give careers advice
- » offer pastoral care

A full range of extra-curricular activities are organised each year that complement and extend our academic curriculum. The students have the opportunity to further develop their social skills, independence, self esteem, self-reliance and physical capabilities as well as having fun.

### Pathway to Exploration (Tier 1)

This programme provides for the needs of individuals with profound and complex learning difficulties including sensory impairment, physical disabilities and severe medical conditions. This programme will support all aspects of your needs including health, care, therapies, medications, and educational development.

### Pathway to Independence and Supported Work (Tier 2)

This programme provides for the needs of individuals with severe to moderate learning difficulties who want to continue to build on essential skills for living, employment and community.

### Pathway for Progression (Tier 3)

This programme serves as a stepping stone for you to progress on to further studies and prepare you for the world of work in a supported college environment. The programme will help you build confidence and further develop your social communication skills by providing opportunities for you to independently apply skills and knowledge learnt in a range of settings including external work experience.

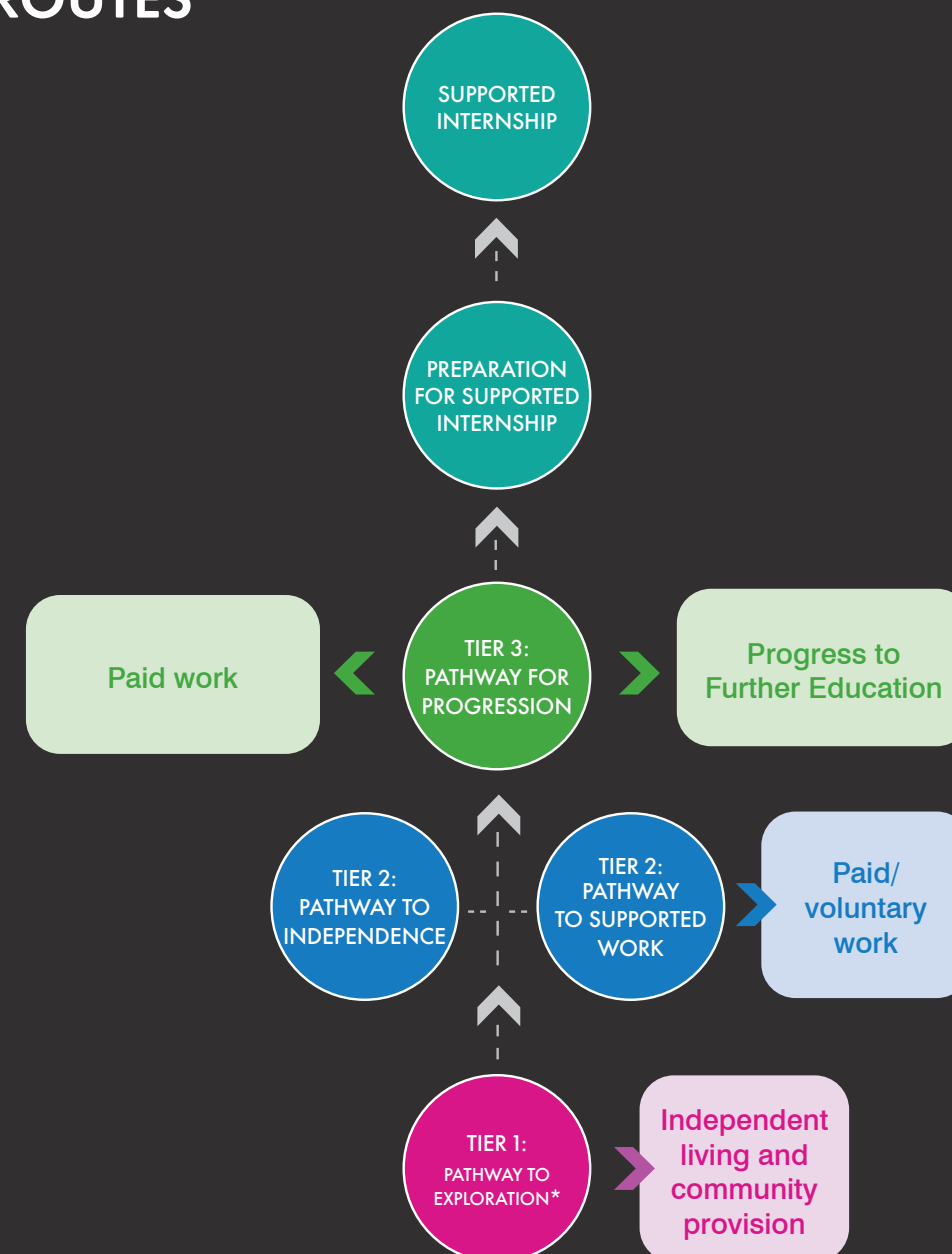
### Preparation for Internship and Supported Internships

We will provide you with the opportunity to develop vital employability and independence skills through our learning companies. These are small commercial businesses run by staff and students and include on-campus learning companies and delivery services. Our internship programmes are designed to prepare learners for either internal or external work-based internships. Learners who are attending a Tier 2 or Tier 3 programme could progress to this offer.

#### They include:

- » supported internships with Royal Berkshire Hospital, Mencap and Oxfordshire employment services
- » supported employment provisions with the help of a specialist agency
- » more than 200 employers providing work experience

# PROGRESSION ROUTES



For more information on our supported studies programmes, and details on how to apply, visit our website and [download](#) our dedicated guide for SEND learners.

# GCSE'S



Unfortunately, not everyone can make the best of their GCSEs the first time round. The reasons can be numerous but, ultimately, for many of us, it was our first time at taking a high-pressure, timed exam on which your future can depend!

If you don't have the results you think you could have gotten, or if you just want to improve your grades, we offer one-year, full-time programmes for 16-19-year olds who want to improve their GCSE grades.

Make a fresh start with your learning in our safe and engaging campus and gain more independence and autonomy over your learning. Here, you're encouraged and supported to create and manage your own schedule and our enthusiastic tutors can help you to get you closer to your goals.

**During your studies with us, you'll gain the skills, knowledge and attributes you need to make a success of your next step, whether that's university, an apprenticeship or entering work.**

If you're not happy with your exam results, we'll help you do something about it. Good GCSE results can make a difference to what university you can enter or, if you want to go straight into an apprenticeship, they can be a stepping stone into your ideal industry. Every year, hundreds of our students go on to study higher-level programmes at almost 100 top universities across the UK and abroad. Recently this has included 18 of the world-class Russell Group's 24 universities, such as University of Oxford, Newcastle University and King's College, London. So, if you're serious about retaking your exams, let us help you.

There are many benefits to retaking your GCSEs, such as the minimum entry requirement for most A Levels being five GCSEs at grades 4-9 (A\*-C), or that even if you're looking to move into the world of work, most employers consider good GCSE results as essential. Either way, you're competing against a whole county of school leavers every year, so getting the best grade you can do will always be worth it. Some other things to consider are:

- » better choice of university
- » greater earning potential
- » many apprenticeships also require good GCSEs
- » broader career choice
- » you improve your chances for every job you apply to
- » increase your eligibility for further education



The teachers are really nice and supportive. The lessons are quite straightforward and it's easy to understand. There's more one-to-one time at college compared to secondary school, and there are more opportunities for support. When I started, my grades were at a grade 3 and now I'm working at a grade 6!"

## Enriko, GCSEs

Read Enriko's full story online at [reading.activatelearning.ac.uk](https://reading.activatelearning.ac.uk) or [bracknell.activatelearning.ac.uk](https://bracknell.activatelearning.ac.uk)

FIND OUT MORE ABOUT THIS  
PATHWAY AT **READING**

**NEARLY  
95%**

of Activate Learning's Bracknell and Wokingham College students taking full-time GCSE programmes or standalone maths and English GCSEs achieved a pass in their 2020 exams.



Over 121,000 people in the UK are employed cutting hair, barbering and providing other hair treatments, which makes up over 80% of the jobs in the overall beauty industry.

From this pathway, you could go on to be a hair stylist, cutting clients' hair, developing your knowledge of the latest trends and colouring techniques; a salon manager, running a team of people offering a number of hair and beauty treatments, ensuring that it remains profitable and that it provides excellent customer service...the list goes on! You could also become self-employed or develop your technical skills in specialist areas such as colouring, extensions, African-hair styling, wedding-hair styling, or many more!



Our training salons are run in partnership with Wella and Affinage, offering access to the latest products and techniques for all students.

At our on-site training salons, not only will you be working with all the latest products and equipment that you would expect to find in a salon, you'll be learning and practicing your skills on real clients. There is also classroom learning involved, where you learn about human physiology, as well as the wider industry and the skills you need for a successful career, including health and safety, advising and communicating with clients, and stock control and management.

You will also visit other local salons, attend masterclasses, visit trade exhibitions, and have the opportunity to take part in competitions to boost your skills, knowledge, and creativity!

We will help you develop the skills you need to work in the hairdressing industry, including:

- » communication
- » problem solving
- » professional standards
- » client consultation
- » time management
- » customer care
- » creativity

► Apprenticeships are available within this pathway

6.6 BILLION

ACROSS THE UK, THE HAIR AND BEAUTY SECTOR IS WORTH £6.6 BILLION.



I came to college to get experience in hairdressing. I enjoy working with my friends, sharing and gaining ideas from them. They help me when I'm unsure of something and I help them too. It boosts my confidence and helps me complete my work on time.

The teaching is great. My hairdressing lecturer helps me and my other classmates get through things we don't understand and explains everything fully in detail. She sets practical homework for us to complete which is extremely helpful and fun."

**Rochell, Hairdressing Level 1**

Read Rochell's full story online at [reading.activatelearning.ac.uk](http://reading.activatelearning.ac.uk) or [bracknell.activatelearning.ac.uk](http://bracknell.activatelearning.ac.uk)

FIND OUT MORE ABOUT THIS PATHWAY AT **READING**

FIND OUT MORE ABOUT THIS PATHWAY AT **BRACKNELL**

ADVANCED

L3

INTERMEDIATE

L2

FOUNDATION

L1

AVAILABLE AT LEVELS: ►



There are lots of different roles in health and social care depending on what you want to do, who you want to work with, and where you would like to work.

This pathway has meaningful industry placements in local clinical care settings with our network of partners. The demand for trained care professionals across the UK is enormous and it's likely you'll have the opportunity to walk straight into a well-paid job on completion of your studies with us, especially if you have already completed your work experience with that employer!

In clinical roles, you could be working in local GP surgeries, pharmacies or hospitals.

If you go on to a degree-level nursing, midwifery or allied health course at university, as of 2020 you are guaranteed a £5,000 a year bursary to help with living costs. This does not need to be paid back!

## One of two pathways on the Health and Social Care Extended Diploma, this programme has a clinical focus with NHS industry placements.

On this pathway, there are guaranteed job opportunities with the NHS Partnerships listed below.

No two days are the same on this programme! You'll cover a range of modules across pharmacy, adult nursing, midwifery, mental health, healthcare science, children and young people. This way, you'll get a broad introduction to the fields of health and social care and be able to better specialise in the areas that interest you the most.

The study is a mix of attending classes at college and training in simulated environments. Each trust provides you with induction training before commencing your placement, including infection control, moving, and handling.

In some instances, there are opportunities to complete the Nursing Associate Programme during your placement. You will complete work experience in your first year and then an industry placement during your second year of approximately 45 days at one of the NHS Trusts. The projects and assignments that you'll complete on this course are all based on realistic workplace situations and activities.

At the end of the course, you will have the knowledge and practical experience you need to go directly into work, or higher education. For a list of possible careers on this pathway, search our website for 'clinical'.

## 30,900

THE WORKFORCE FOR MEDICAL PRACTITIONERS IS PROJECTED TO GROW BY 10.4% OVER THE PERIOD TO 2027, CREATING 30,900 JOBS.



I applied to the trauma ward in Horton General. I had been trying to get an interview there for a while, even before doing this work experience at the hospital, but because I was so young, and I didn't have that much experience, my applications were rejected.

"But, with my work experience and care certificate from my college course, they called me in for an interview and I got accepted! It was such a great day for me. Everything that I was trying to do on that work experience counted for something. I was working so hard so I could get to where I wanted to be, and I made it!"

## Xhuada, Health and Social Care: Clinical Level 3

Read Xhuada's full story online at [reading.activatelearning.ac.uk](https://reading.activatelearning.ac.uk) or [bracknell.activatelearning.ac.uk](https://bracknell.activatelearning.ac.uk)

FIND OUT MORE ABOUT THIS PATHWAY AT **READING**

FIND OUT MORE ABOUT THIS PATHWAY AT **BRACKNELL**

ADVANCED

L3

INTERMEDIATE

L2

FOUNDATION

L1

AVAILABLE AT LEVELS: ▶





**There are lots of different roles in health and social care depending on what you want to do, who you want to work with, and where you would like to work.**

Social care means providing physical, emotional and social support to help people live their lives to the fullest. In this industry, you will be providing a range of services to support both children and adults. In social care roles, you could be helping people in their own homes, in residential homes, or in a number of other places such as day centres or supported housing. For a more complete list of roles on this pathway, search our website for 'social care'.

**One of two pathways on the Health and Social Care Extended Diploma, this programme has a social care focus with a minimum of 45 days industry placement.**

We work closely with the local authorities, care providers, specialist schools and day-care centres to give you regular work experience placements throughout your programme. This means you can experience the full breadth of health and social care and begin to develop expertise in specialist areas, increasing your skills and experience and putting you ahead of the competition when applying to university or moving directly into employment. Many former students have secured jobs with great prospects through these placements. Check out our 'meet the students' section on our website to read about their experiences on this course.

The study is a mix of attending classes at college and training in simulated environments. There's also some mandatory training at the start of your placement, work experience in your first year, and placements for two days

a week with a local employer. The projects and assignments that you'll complete on this course are all based on realistic workplace situations and activities.

At the end of the course, you may decide to go directly into work, or you could enter higher education. Possible careers include social work, social-care work, care management, occupational therapy or other professions related to social care. For a more complete list of roles on this pathway, search our website for 'social care'.

**Apprenticeships are available within this pathway**

**3.6 MILLION**

ACROSS ENGLAND NEARLY 3.6 MILLION PEOPLE ARE EMPLOYED IN THE HEALTH AND SOCIAL CARE INDUSTRY IN 2021, WITH NEARLY 140,000 JOB OPENINGS ANNUALLY



One of the main things that inspired me about the college was the care suite—an area that replicates a real care facility—and how we could use it to do practical things. We got to practice taking blood pressure, taking blood samples, swabbing things within the care suite to see what was dirty, how to properly make beds, etc. We also used wax to make fake wounds and learn how to dress them properly. It was really interesting."

**Sarah, Health and Social Care: Social Level 3**

Read Sarah's full story online at [reading.activatelearning.ac.uk](https://reading.activatelearning.ac.uk) or [bracknell.activatelearning.ac.uk](https://bracknell.activatelearning.ac.uk)

FIND OUT MORE ABOUT THIS PATHWAY AT **READING**

FIND OUT MORE ABOUT THIS PATHWAY AT **BRACKNELL**

\*Available as a Higher Apprenticeship

AVAILABLE AT LEVELS: ▶

HIGHER  
**L 4-7\***

ADVANCED  
**L3**

INTERMEDIATE  
**L2**

FOUNDATION  
**L1**



Across the hospitality and catering industry in the UK there are 3.18 million jobs, with the highest growth forecasts over the next five years including cooks, chefs, and restaurant managers.

You could progress from this pathway to becoming, among other things, a chef de partie, sous chef or head chef, who creates menus for a restaurant, cafeteria or catering establishment, managing the kitchen, monitoring costs and training staff. You can also progress onto roles outside the kitchen, becoming a restaurant manager, for example, running a restaurant, including hiring staff, scheduling rotas, managing bookings and monitoring budgets.

To be successful in this industry, you'll need to be committed, resilient, understand that you won't be working a traditional 'nine to five' role and have customer service at the core of everything you do.

We've partnered with world-renowned, Michelin-starred chef Heston Blumenthal and his team at the Fat Duck Group to design study programmes that give you the best possible start in a demanding, fast-paced, yet hugely rewarding industry.

What sets our catering programmes apart from the rest is the emphasis we place on the fundamentals of understanding ingredients and exploring their tastes, flavours and fusions.

Heston Blumenthal has identified two critical attributes for working in this industry: Restless Perfectionism and Creative Curiosity. To find out more about how these attributes can benefit you and how we develop them, visit our website and search for 'culinary arts'. Inspired by these critical attributes, you will be provided with a rich variety of learning experiences, including: practical exploration, food science experiments, work and industry experience, and employer-led projects.

In partnership with  
Heston Blumenthal's  
Fat Duck Group



The course is hands-on, which I like as I work well with that style of learning. The teachers are all amazing and are really supportive and encouraging.

I've really enjoyed my time at college. If I didn't come here, I wouldn't have the same opportunities. I've gained so much confidence being at college and would recommend this course to anyone.

### Orin, Professional Culinary Arts Level 3

Read Orin's full story online at [reading.activatelearning.ac.uk](https://reading.activatelearning.ac.uk)

FIND OUT MORE ABOUT THIS  
PATHWAY AT **READING**

On top of all that, we add in other experiences and opportunities to help you get ahead in your career, including:

- » work alongside experienced chefs on live projects
- » the opportunity to compete in regional and national food competitions
- » catering for big events, including awards dinners and functions

This is a three-year pathway that starts with teaching you the fundamentals of professional cookery right through to advanced techniques practiced in modern restaurants. You will start your progression at Year 1 (Level 1). However, if you have been in the industry for one year or have a relevant professional qualification, it may be possible to start on Year 2 (Level 2) of the course.

► Apprenticeships are available within this pathway

ADVANCED

L3

INTERMEDIATE

L2

FOUNDATION

L1

AVAILABLE AT LEVELS: ►



Key growth areas within the IT and computing industry include social and digital media, data protection, cyber security, games design, website development, and cloud/mobile technologies.

The IT and Computing industry is a strong employer in South East England, with 22% more jobs than in Great Britain overall in 2021. Mid-point hourly wages are also well above average at £21.19/hour, so you'll be well placed for job opportunities, work experience and career prospects.

In 2020, there was a 20 percent increase in job vacancies within this industry. Over the next five years, this is expected to triple!

**You will learn to design algorithms, use logical reasoning to debug errors, create programmes, and understand the differences between data and information.**

Through practical, hands-on exercises using the latest equipment, you will build an understanding of different operating systems and learn to evaluate the quality of various solutions when recommending improvements.

You'll also have the opportunity to gain industry insights and experience through employer visits and projects set by external mentors. Past students have gained experience in programming VEX robots, inspiring local school children in the use of Raspberry Pi computers, and the use of Lego Mindstorm, as well as enjoying guest lectures and cyber-security curriculum design from IBM.

At Activate Learning colleges, you can progress from Level 1 (Foundation), all the way to a university-level qualification at Reading College (South Central Institute of Technology).

Activate Learning has recently formed a collaborative partnership with Milton Keynes College, to build a new Institute of Technology (IoT) see page 28 for more information, or find out more at [www.southcentraliot.ac.uk](http://www.southcentraliot.ac.uk)

4 BILLION

THE UK IS ONE OF THE LARGEST GAMING MARKETS IN THE WORLD, GENERATING ALMOST £4 BILLION IN REVENUE.

FIND OUT MORE ABOUT THIS PATHWAY AT **READING**

FIND OUT MORE ABOUT THIS PATHWAY AT **BRACKNELL**

#### NEW TO READING COLLEGE 2022-23

New technical and digital qualifications to meet in demand skills. Supporting career pathways in:

- » Digital Software Development and Programming
- » Digital Project Management and Change
- » Digital Security
- » Digital Data Analytics
- » Digital Cloud Networking
- » Digital Games and Animation
- » Leadership

► **Apprenticeships are available within this pathway**

► **Providing project based learning, real research and development, valuable employer partnerships, and supportive progression.**

HIGHER  
L  
4-7\*

ADVANCED  
L3

INTERMEDIATE  
L2

FOUNDATION  
L1

AVAILABLE AT LEVELS: ►

\*L4 and above is via the South Central Institute of Technology



# MEDIA

- » **Interactive Arts:** for example, interactive digital platform design, including web, app and game design
- » **TV and Film Production**
- » **Digital Arts**
- » **Virtual Design**



**Qualifications in our media pathway are accredited by the prestigious University of the Arts London (UAL).**

University of the Arts London (UAL) is recognised as a world top-five university for art and design, according to the world's leading provider of analytics and insight into the global higher education sector—the QS World University Rankings—and is Europe's largest specialist university for the creative industries.

These programmes prepare you for the fast-paced worlds of work and university by immersing you in live projects, where you'll learn the practical skills you'll need to work to a high standard, manage your workload and direct your own learning. You'll also have the opportunity to complete film projects for external clients and develop your skills in teamworking. You will dedicate a lot of your time to building an extensive portfolio of creative work.

At our colleges, you can work with an amazing array of equipment in the professional-standard TV/film recording studios.

## 25,835

ACROSS THE UK, THIS INDUSTRY IS EXPECTED TO GROW BY 3% UP TO 2027, WITH 25,835 NEW JOB OPENINGS ANNUALLY.



Media and communication is an industry that is concentrated in South East England, with over 106,000 jobs in 2021 and nearly 4,000 annual job openings forecast over the next five years in this region alone.

The UK's multi-billion-pound entertainment and media industry's worth grew by £8 billion between 2018 and 2021 to £76 billion annually. This makes it the second largest market in Europe, the Middle East and Africa. Typical roles in this sector include social media coordinators, visual effects supervisors, software programmers and web designers. The industry has particular expertise shortages in technical development, animation, production and engineering, and transmission.

**ual:** university of the arts london



The idea of working towards my career and goal in life has run through my time at college. Throughout my course here, I've been building a portfolio of work and experience that I can show to potential employers or at an interview for university and that can really help me stand out above other applicants."

**Jessica, Media Level 3**

Read Jessica's full story online at [reading.activatelearning.ac.uk](https://reading.activatelearning.ac.uk) or [bracknell.activatelearning.ac.uk](https://bracknell.activatelearning.ac.uk)

FIND OUT MORE ABOUT THIS PATHWAY AT **READING**

FIND OUT MORE ABOUT THIS PATHWAY AT **BRACKNELL**

ADVANCED  
**L3**

INTERMEDIATE  
**L2**

FOUNDATION  
**L1**

AVAILABLE AT LEVELS: ▶





A profession in makeup combines techniques from film and television with the conceptual artistry and commercial awareness of fashion and beauty makeup. You'll work with clients by discussing their requirements and advising them with creative ideas and solutions.

Between 2011 and 2019, the number of jobs in the UK cultural sector, which includes film and TV, grew by 24%.

Roles on this pathway include freelance media make-up artist, make-up artist specialist for theatre, film or TV, skin camouflage specialist, and many more!

Our programmes cover the essentials of client care and consultation. You'll also develop your skills in specialist areas, such as dressing and styling hair, making and applying prosthetics, designing and making body art, and applying quality makeup for fashion photography, TV, film and theatre.

The work is highly practical, and you will be practicing the skills as you learn them, steadily building up a creative portfolio as you complete your coursework. You'll be training in the industry-standard salons at our campuses, using the latest equipment and products, as well as taking part in exciting on-location shoots and performances, and undertaking work-based projects with leading industry employers.

You'll study creative theory and also gain skills that are transferable to other industries too, such as independent study, teamwork, research, and planning.

28 BILLION

CULTURAL BUSINESSES ACROSS ENGLAND GENERATE 694,700 JOBS, WITH 6,910 BUSINESSES COLLECTIVELY CONTRIBUTING £28 BILLION EACH YEAR TO THE UK ECONOMY



Media makeup interests me because I'm very into special effects and so thought this was the best way to get into the industry. Because you're only doing one course, you learn stuff that's only specific to you compared to learning everything at school.

This course has definitely given me the skills I need. I've become more sure of myself. I know what I'm doing, I've gained more confidence in how to work a lot quicker and be more efficient."

**Ethan, Media Makeup Level 2**

Read Ethan's full story online at [reading.activatelearning.ac.uk](https://reading.activatelearning.ac.uk) or [bracknell.activatelearning.ac.uk](https://bracknell.activatelearning.ac.uk)

FIND OUT MORE ABOUT THIS PATHWAY AT **READING**

ADVANCED

L3

INTERMEDIATE

L2

FOUNDATION

L1

AVAILABLE AT LEVELS: ▶



**Our state-of-the-art facilities include hybrid-vehicle diagnostic equipment and the latest vehicle lifts. We have also received donations of new vehicles from manufacturers including Hyundai, to offer you the chance to train on a range of modern engines.**

Our teachers create an exciting and supportive environment for students, offering insights and tips from their careers in the motor vehicle industry. You'll learn practically wherever possible, putting your skills to the test in our well-equipped workshops.

This pathway also includes the country's only full-time programmes in classic vehicle restoration. These programmes have been designed in partnership with the Federation of British Historic Vehicle Clubs to meet a growing skills gap in this lucrative industry.

Students get access to a broad range of classic and historic vehicles, including visits to Bicester Heritage, a dedicated centre for classic vehicles and aviation.

On our classic vehicle programmes, students are given the opportunity to work on real-life restoration projects.

► **Apprenticeships are available within this pathway**

20,000

20,000 NEW JOBS ARE FORECAST TO BE CREATED IN THE AUTOMOTIVE SECTOR BY 2030



We can do work experience or apprenticeships, but I felt that it was better to do the work experience first and see how that fits in with my other responsibilities before jumping into an apprenticeship."

"Tutors are all really supportive and I can email them at any time. They're really flexible and, if I have a problem or I didn't understand something in class, I can always email them to ask them to go through something with me again or go in the next day and speak to them in person."

### Michelle, Vehicle Maintenance Level 1

Read Michelle's full story online at [reading.activatelearning.ac.uk](https://reading.activatelearning.ac.uk) or [bracknell.activatelearning.ac.uk](https://bracknell.activatelearning.ac.uk)

FIND OUT MORE ABOUT THIS PATHWAY AT **READING**

FIND OUT MORE ABOUT THIS PATHWAY AT **BRACKNELL**

AVAILABLE AT LEVELS: ►

ADVANCED

L3

INTERMEDIATE

L2

FOUNDATION

L1

The motor vehicle industry keeps everybody moving. Specialist skills are needed by private individuals and industries such as public transport, retail delivery, breakdown recovery, emergency services and motorsports.

Find and repair faults in your clients' vehicles as a mechanic, perform similar duties as a cycle technician, or become a parts technician, identifying and using the correct parts to repair any fault in a customers' vehicle. This pathway can also lead to a career in automotive sales and marketing. 364,300 people employed across the entire automotive sector in the UK and more than 6,993 annual job openings forecast over the next five years for motor vehicle maintenance and repair occupations in the UK.





# PERFORMING AND PRODUCTION ARTS

Acting » Dance » Musical Theatre » Singing » Technical Theatre  
(Lighting Design, Stage Management, Sound Engineering,  
Scenic Construction Production Management)  
» Music Performance » Music Production

Our performing and production arts programmes are great preparation for university, vocational, or dance college. They build your core skills in acting, dancing and stage management, so you can aim for a career in the performing arts sector. If music is your thing, you'll get experience of performing live to audiences and working in sound studios. You can even collaborate with Media students to make music videos!

Music, visual arts, and the performing arts industries contribute over £4 billion a year to the UK economy. As of 2020, in the UK, there are 201,387 jobs in just the performing arts, with a further 8,572 openings per year

Arts officers, producers and director jobs are forecast to grow ahead of the national average rate between 2020 and 2025.



Our courses give you the chance to experience a wide variety of modern, contemporary and practical skills and techniques in the performing and production arts. You'll even have the opportunity to specialise in your area of interest!

We want you to collaborate in your learning experience, so our industry-experienced tutors will help you to identify your areas of interest and areas for improvement.

You'll join Reading Studio of Dramatic Art, which is a partnership with Reading's professional theatre company: Reading Rep. Working work with Reading Rep will improve your chances of getting into drama school, and enhance your CV. It will also provide you with references from professional practitioners

Reading Rep are also opening a brand new theatre in September 2021.



I came to college because I wanted to pursue a career in acting for film and TV.

You get treated like an adult here. It's different to school, they don't look down on you, people support you and you feel like you have a voice. The teaching is different from school too. It's a lot more but it's exciting and they're there for you whatever you need. "

## Lethabo, Performing Arts Level 2

Read Lethabo's full story online at [reading.activatelearning.ac.uk](https://reading.activatelearning.ac.uk) or [bracknell.activatelearning.ac.uk](https://bracknell.activatelearning.ac.uk)

FIND OUT MORE ABOUT THIS PATHWAY AT **READING**

You'll develop practical performance skills for using voice and movement to communicate effectively with an audience.

Teamwork, self-discipline and confidence are core skills that you'll develop on the programme, and you'll also get valuable experiences from directing and leading your classmates.

Not only are these skills and experiences vital for the creative industries, but they also prepare you for other career paths and life in general!

Music students benefit from recording studios and performance spaces, with opportunities to gain performance experiences throughout the year.

ADVANCED

L3

INTERMEDIATE

L2

FOUNDATION

L1

AVAILABLE AT LEVELS: ▶



**Our industry-specific public services programmes will prepare you for progression into many exciting, fast moving industries. This could include employment in the blue light or non-blue light professions, or progression to university-level studies.**

You'll develop key attributes and personal qualities such as discipline, teamwork and problem-solving through practical learning. You could be out in the fields, abseiling, participating in team-building activities, problem-solving challenges or planning and organising them for your classmates!

There is classroom learning involved, but this will also be geared towards completing practical work and participating in lessons.

During the programme, you'll receive expert training for the public services' entrance tests, go on field trips to various public service settings such as prisons, police stations, Crown courts, fire stations and RAF bases.

**5.5 MILLION**

THERE ARE NEARLY 5.5 MILLION PEOPLE EMPLOYED IN THE PUBLIC SECTOR IN THE UK



I would strongly recommend this course to other people. It's such a welcoming environment and there's a wide range of activities for you to take part in. The college helps you build the confidence to motivate yourself and work hard. It's also focused towards finding work after college. If you're not good at sitting down at a desk and learning through looking at presentations, etc and you prefer hands-on work, then this is the place for you. Me personally, I like to learn by doing; I remember things better if I physically do them rather than sitting down and watching a teacher tell me about them."

### Bradley, Public Services Level 3

Read Bradley's full story online at [reading.activatelearning.ac.uk](https://reading.activatelearning.ac.uk) or [bracknell.activatelearning.ac.uk](https://bracknell.activatelearning.ac.uk)

FIND OUT MORE ABOUT THIS PATHWAY AT **READING**

FIND OUT MORE ABOUT THIS PATHWAY AT **BRACKNELL**

We work in partnership with your potential future employers including: Thames Valley Police, HM Prison service, British Army, Royal Navy, RAF, and the Fire and Rescue Services. This gives you exposure to real-life training situations and allows you to forge relationships with key industry contacts.

With plenty of opportunities for progression and promotion, you'll never get bored in the public sector. After London, South East England has the largest share of public sector employees in the UK, with 649,000 employees, accounting for 15% of all public sector employment in the region.



AVAILABLE AT LEVELS: ▶



As of 2020, there were approximately 14,000 full-time sports players employed in the UK. In total, there are over 300,000 people employed in the UK in sports-related job roles, with 12,500 new openings per year. These include roles such as sports coaches, instructors, and match officials.

Activate Learning has an excellent track record of developing international athletes and coaches within football, in partnership with Banbury United FC, Bracknell Town FC and Reading FC. In 2019, we expanded our sports academy offer, to include Rugby Union in partnership with Wasps RFC.

**“A great pianist doesn’t run around the piano or do push ups with his fingers. To be great, they play the piano.”— Jose Mourinho**

If you live and breathe sports, love to mastermind victories or train others to excel, you need to be able to learn by doing. There will be classroom-based assignments, but mostly you will work and train as an athlete. The majority of students undertake a BTEC in Sport and Exercise Science or Sport, but you can also study A Levels alongside your training.

Through our partnerships with **Reading Football Club Community Trust, Bracknell Town FC and Bracknell Cobras The Playmaker Basket Ball Academy**, you’ll have the opportunity to pursue a professional sporting career whilst studying to achieve a recognised qualification at one of our colleges.

Depending on your athletic development stage, you’ll have access to:

- » sports therapy and rehabilitation provision
- » strength and conditioning sessions
- » performance analysis
- » masterclasses

Below are some examples of the possible careers and jobs you could go into after completing a sports academy programme at Activate Learning colleges.

- » professional sportsperson
- » sports consultancy
- » development manager
- » teaching and coaching
- » sports therapy
- » sports media and journalism

Martin Amoo-Gottfried, Director of Basketball and Head coach of the BWC Basketball Academy is representative of the calibre of coaches we have across all our sports academies, having been successful during both a playing and a coaching career, winning league and National titles in the US. He also played professionally in the BBL and for the GB National team.



The experiences I gained through trying to attain my dreams of playing basketball for a living have really helped me as a coach. To understand what the players are going through and being able to relate to, and advise them, is crucial to players maximising their potential. Basketball taught me a myriad of life lessons that I use long after my playing career finished. I hope I can pass these on to our players.”

**Coach Martin**

FIND OUT MORE ABOUT THIS  
PATHWAY AT **READING**

FIND OUT MORE ABOUT THIS  
PATHWAY AT **BRACKNELL**

\*Available at other  
Activate Learning colleges

AVAILABLE AT LEVELS: ▶





If you choose this pathway, you will combine the study of anatomy, physiology and psychology with biometrics, exercise, health and lifestyle. In addition, you will develop skills in fitness testing and training, sport and exercise massage, sports injuries and coaching.

We have onsite gyms that are filled with the latest sports and training equipment to help you keep fit and advance your studies.

If a career in fitness is for you, you could make an impact on the lives of people of all ages and walks of life. This sector boosts the economy through job creation, and indirectly by reducing healthcare costs due to a healthier population with improved mental wellbeing.

Our network of employer partnerships means, whichever programme you choose, you will get practical experience in the sports, exercise science, fitness and therapy sectors throughout your time at college.

300,000

THERE ARE OVER 300,000 PEOPLE EMPLOYED IN SPORTS-RELATED JOBS IN THE UK AND 12,500 OPENINGS PER YEAR.



The sport and physical activity industries contribute £39 billion to the UK's economy. Much of this comes from grassroots sport: the millions of people who buy trainers, bikes, gym memberships, get physiotherapy, or pay match fees.

We work closely with sports providers in our local areas to give you the opportunity to learn how to be an approachable, knowledgeable and effective motivator.

As of 2021, there are over 300,000 people employed in the UK in sports-related jobs. Popular roles in this sector include sports coaches, instructors, and officials, with one in ten graduates employed as secondary education teaching professionals.



FIND OUT MORE ABOUT THIS PATHWAY AT **READING**

FIND OUT MORE ABOUT THIS PATHWAY AT **BRACKNELL**

\*Available at other Activate Learning colleges

AVAILABLE AT LEVELS: ▶

HIGHER  
L  
4-7\*

ADVANCED  
L3

INTERMEDIATE  
L2

FOUNDATION  
L1



**You will have the opportunity to visit organisations including hotel chains and major tourism destinations, such as Disneyland Paris. These trips will increase your understanding of the importance of customer service and attention to detail in this service-oriented industry.**

Previous students also regularly supported major local events. These kind of projects develop excellent teamwork skills and enable you to experience the realities of working in this fast-paced and, at times, high-pressured industry.

Activate Learning prides itself on its relationships with local partners and as a result, you will also have the opportunity to join work experience placements in numerous organisations including hotels, transport companies, ski resorts and tourist attractions, both in the UK and abroad.

**As part of your studies, you will also have access to:**

- » dedicated study spaces
- » IT suites and computer facilities
- » the opportunity to purchase discounted laptops through our partnership with Academia
- » virtual reality experiences as part of cabin crew training

400,000

THE TOURISM INDUSTRY  
HAS CREATED MORE THAN  
400,000 NEW JOBS OVER THE  
LAST 10 YEARS



The facilities are great. They have an air cabin crew training room where we get to practice doing things such as the safety demos. Having these specialist facilities is different to school and it helps prepare you for work and gain more confidence.

The college really supports you work towards your career goals. We've had different travel companies come in and talk about what they do. It's helpful because it shows you the different options in the travel industry and where courses like this can lead to."

### Vanessa, Travel and Tourism Level 3

Read Vanessa's full story online at [reading.activatelearning.ac.uk](https://reading.activatelearning.ac.uk) or [bracknell.activatelearning.ac.uk](https://bracknell.activatelearning.ac.uk)

FIND OUT MORE ABOUT THIS  
PATHWAY AT **READING**

FIND OUT MORE ABOUT THIS  
PATHWAY AT **BRACKNELL**

**Working in travel and tourism involves advising on and making travel arrangements for customers, as well as providing services to enhance holidaymakers' enjoyment, comfort and safety.**

The focus in this service-oriented industry is on transferable skills such as customer service and attention to detail. Careers include cruise-ship steward, airline cabin crew, hotel receptionist/concierge, travel agent, and events manager, to name a few!

In the UK, 2.7% growth is expected in this sector between 2022–2027. Air travel staff, and hotel managers are the largest occupations, with 2.35% and 4.73% growth expected in this time frame.



ADVANCED

L3

INTERMEDIATE

L2

FOUNDATION

L1

AVAILABLE AT LEVELS: ▶



Illustration - Fine Art - Digital Art - Multimedia Journalism  
- Creative Arts Business and Enterprise - Photography  
- 2D, 3D, and 4D design and more.

# VISUAL ARTS AND DESIGN

This pathway can help you develop a number of exciting careers in the creative sector, such as photographer, events manager, fine artist, and creative director, among others.

Job projections for visuals arts and design roles such as arts officers, graphic designers, photographers and AV operators are strong, with well over 2,000 new annual job openings forecast across each of these occupations.

The skills that you will learn on our visual arts and design pathway, such as blended technical and creative skills, collaborative interdisciplinary working, and enterprise are of increasing importance across the job market.

Qualifications in our Visual Arts and Design pathway are accredited by the prestigious University of the Arts London (UAL).

University of the Arts London (UAL) is recognised as a world top-five university for art and design, according to the world's leading provider of analytics and insight into the global higher education sector—the QS World University Rankings—and is Europe's largest specialist university for the creative industries. Our accreditation with University of the Arts London means that you will have the opportunity to have your work shortlisted to appear in the annual UAL Origins exhibition in London.

Our programmes follow an inter-disciplinary approach, which means you will be working with a variety of mediums so that you can better find your strengths and interests. This will also prepare you for your next step, whether that is further study or employment. Teaching and learning are carried out in traditional craft workshops and digital MakerSpaces. You will also get access to work experiences throughout your programme to prepare you for the realities of working in this industry. This includes responding to live briefs set by employers, work experience, taking part in competitions, and attending masterclasses and careers talks.

**ual:** university  
of the arts  
london

Choosing a visual arts and design pathway develops your creativity and problem-solving skills in areas including painting, textiles, printmaking, sculpture, concept architecture, visual special effects and animation (including model making), creative business, marketing, graphics, fashion, visual studies, design, computer design software, photography, historical and contextual studies, personal and professional development.

£71.7 BILLION

THE TOTAL CONTRIBUTION OF EVERYONE EMPLOYED IN THE UK IN DESIGN ROLES IS £71.7BN, AS MEASURED BY GROSS VALUE ADDED, PRODUCTIVITY, TURNOVER AND EMPLOYMENT.



I was really interested in art anyway and photography especially, as I'm more of a creative than academic person. Plus, college is way more of a relaxed environment than sixth form and I don't have any plans to go to university, I just want to get my qualifications here and do my own thing with my photography."

**Leah, Art and Design Level 3**

Read Leah's full story online at [reading.activatelearning.ac.uk](https://reading.activatelearning.ac.uk) or [bracknell.activatelearning.ac.uk](https://bracknell.activatelearning.ac.uk)

FIND OUT MORE ABOUT THIS  
PATHWAY AT **READING**

FIND OUT MORE ABOUT THIS  
PATHWAY AT **BRACKNELL**

\*Available at other  
Activate Learning colleges

AVAILABLE AT LEVELS: ▶

HIGHER  
L  
4-7\*

ADVANCED  
L3

INTERMEDIATE  
L2

FOUNDATION  
L1



# CASE STUDY



My grades weren't great after finishing secondary school. I wanted to redo my GCSEs and found that Activate Learning offered this, so I chose to study here. When I started, my grades were at a grade 3 and now I'm working at a grade 6!

I'm really enjoying it, the teachers are really nice and supportive. The facilities are all great and we have access to all the equipment we could ever want.

The lessons are quite straightforward and it's easy to understand. There's more one-to-one time at college compared to secondary school, and there are more opportunities for support."

"I am on the Science pathway of the GCSE programme. My mum is in the medical field which is why I want to go into that sector. I'll be continuing my studies and doing a BTEC in Applied Science at Reading College in September and I'm really looking forward to it!"

**Enriko Gaceta**  
GCSEs



# SO WHAT'S NEXT?

If you've looked through the prospectus and are still undecided about your options, come to one of our open events, either in person or online, and speak to our tutors, get a feel for the place and discuss your options.

## Bracknell and Wokingham College

Saturday 9 October 2021, 9:30am–12:30pm

Wednesday 24 November 2021, 4–7pm

Wednesday 9 February 2022, 4–7pm

Saturday 18 June 2022, 9:30am–12:30pm

 /BracWokCollege  @brackwokcollege

## Reading College

Wednesday 13 October 2021, 4–7pm

Saturday 13 November 2021, 9:30am–12:30pm

Wednesday 2 February 2022, 4–7pm

Saturday 11 June 2022, 9:30am–12:30pm

 /readingcollege  @readingcollege

Alternatively, if you're certain about which pathway you want to choose **apply online now!** Search for your chosen course at [bracknell.activatelearning.ac.uk](https://bracknell.activatelearning.ac.uk) or [reading.activatelearning.ac.uk](https://reading.activatelearning.ac.uk) and click on 'Apply Now'.

"I felt very welcome and comfortable during this event. The information given to me was explained very clearly and easily taken in."

- Virtual Open Event visitor

VISIT [BRACKNELL.ACTIVATELEARNING.AC.UK/EVENTS](https://bracknell.activatelearning.ac.uk/events)  
OR [READING.ACTIVATELEARNING.AC.UK/EVENTS](https://reading.activatelearning.ac.uk/events)





ACTIVATE  
LEARNING

0800 612 6008

[enquiries@activatelearning.ac.uk](mailto:enquiries@activatelearning.ac.uk)

[www.activatelearning.ac.uk](http://www.activatelearning.ac.uk)