



BANBURY AND BICESTER COLLEGE
BRACKNELL AND WOKINGHAM COLLEGE
CITY OF OXFORD COLLEGE
GUILDFORD COLLEGE
MERRIST WOOD COLLEGE
READING COLLEGE

GO HIGHER

HIGHER EDUCATION GUIDE 2022-23

HNCS | HNDS | FOUNDATION DEGREES
BA AND BSC (HONS) DEGREES | PGCE



WELCOME

Hello and welcome to the Activate Learning Higher Education Guide.

Embarking on a Higher Education qualification is an important investment in your future.

At Activate Learning, our Higher Education programmes are designed to ensure that you develop the academic, technical, and employability skills that will set you apart in progressing to employment and/or further higher-level study.

As well as a focus on career pathways, our Higher Education programmes are characterised by a unique approach to learning that is based upon our Learning Philosophy, which understands how people learn best by providing environments, opportunities, and experiences where students can thrive.

We recognise that every student is unique, so our approach to achieving positive outcomes for all students is to work in partnership with you as an individual.

We will help you realise your full potential through providing a complete educational experience where you feel supported and confident in your studies as well as inspired and motivated by the opportunities available to you.

I hope you find this guide useful and that you are inspired and motivated to take the next step of your learning journey with us.

Very best wishes,



Director of Higher Education,
Activate Learning

> We work with the following partners:



CONTENTS

Why study with Activate Learning?	3
Our learners	5
Student support	7
Our Higher Education programmes	9
Our locations	13

Welcome to our colleges

City of Oxford	15
Banbury and Bicester	16
Reading	17
Bracknell and Wokingham	18
Guildford	19
Merrist Wood	20

Higher Education levels explained	21
Career pathways and programmes	23-64
Animal Management	23
Art and Design	29
Business and Enterprise	33
Construction	37
Counselling	41
Digital Technologies	45
Engineering	49
Furniture	53
Sports Coaching, Fitness and Rehabilitation	57
Teaching	61
Access to Higher Education	65
How to apply	67
Money matters	69
Quality assured	71

WHY STUDY

HIGHER EDUCATION WITH ACTIVATE LEARNING?

Activate Learning will help you to develop the skills, knowledge, confidence and determination required to succeed. With our award-winning Learning Philosophy, and our expert teachers, we will support you to improve your employment opportunities, income potential and enjoy a brighter future.

Our colleges are at conveniently accessible locations and contain industry-standard, specialised facilities. Here, we nurture an atmosphere of independence to help you reach your goals, whatever they may be.

OUR LEARNING PHILOSOPHY



Our Learning Philosophy
is about YOU - [LEARN MORE](#)



STUDENT EXPERIENCE

You'll work to a more flexible timetable, learn in an independent environment, and make new friends. Also, you can access facilities at our colleges and some of our partner universities.



GREAT LOCATIONS

Study at town and city-centre campuses; most of our colleges are close to shops, restaurants, cultural hotspots, amenities, and travel links.



SUPPORT

Smaller class sizes mean we can give you more individual attention and support along with dedicated HE Study Support.



LOWER COST

Save on living and travel costs by staying close to home and benefit from our lower tuition fees.



INNOVATIVE TEACHING

Enjoy innovative teaching and assessment methods underpinned by our Learning Philosophy that help you develop at your own pace.



SPECIALIST PROGRAMMES

Choose from a variety of specialist and career-focussed programmes, including unique courses such as Furniture Design.



EMPLOYABILITY

Develop the employability skills required by employers with our industry-standard facilities.



EVENTS AND ENRICHMENT

Join in with student activities and go on trips around the UK and the world.

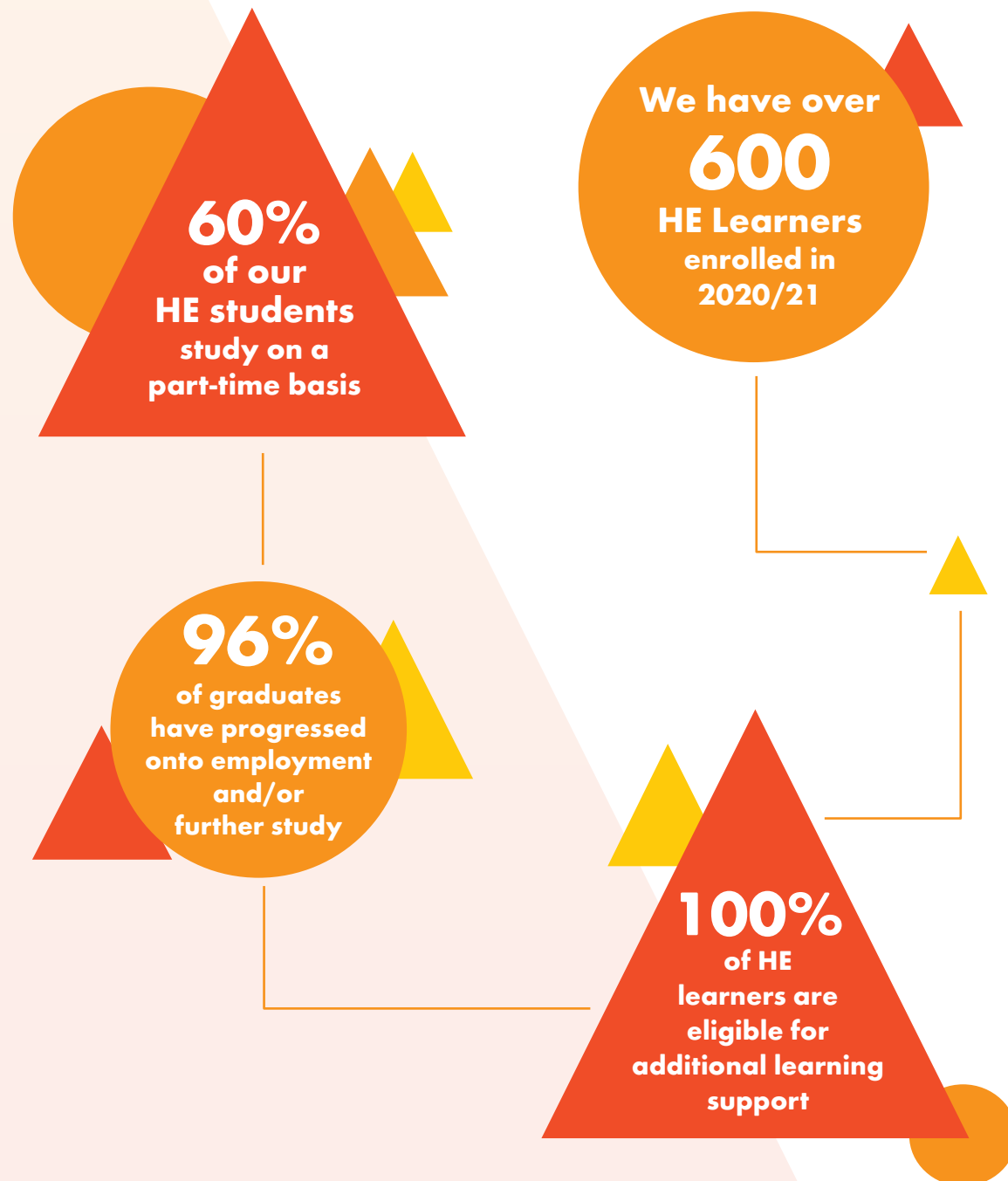


PROGRESSION

We ensure you will improve and develop the skills you and your chosen industry need by delivering programmes that have been co-created with local and national employers to enable you to progress to employment and/or further study..



OUR LEARNERS



“ ...BUT NOW I
CAN REALLY SEE
THAT I’VE BEEN
GIVEN EXACTLY
THE SKILLS AND
KNOWLEDGE
THAT PEOPLE
ARE LOOKING
FOR IN THE
JOB MARKET.

— CARLY



STUDENT SUPPORT

We offer flexible support for students with disabilities studying higher education programmes at Activate Learning:

- ▶ One-to-one meetings with the HE support team to discuss your support needs, including reasonable adjustments. E.g. you could be allowed extra time in exams
- ▶ We work with programme coordinators to ensure that you will be supported
- ▶ Small study skills workshops, including topics such as revision tips, planning your essays and how to manage your time effectively
- ▶ One-to-one study skills support and mentoring
- ▶ Support and guidance for students applying for Disabled Students Allowance funding
- ▶ Screening for or diagnosing specific learning difficulties, such as dyslexia
- ▶ Referral to the Sensory Impairment team, supporting students who are deaf, hard of hearing or visually impaired

For information regarding support with mental health issues, contact Student Services on **01865 551998** or **via email: hesupportservices@activatelearning.ac.uk**.

“**THE STUDY SUPPORT IS the best**

learning support I have ever had, which helped me to achieve my PGCE”

“The teaching, course structure and tutor support is excellent.

Tutors are really thorough, really proficient
at providing guidance and support.”



“I would like to express my gratitude to my study support tutor.

The belief that she has in me is absolutely amazing,

she worked with me to help put strategies in place for any weaknesses due to my dyspraxia and dyslexia and more importantly highlighted my strengths at every opportunity.

She believed in me when I struggled to believe in myself”

“**Thank you**

for all your help on the wood sustainability essay.

I was really pleased with the outcome,

I GOT A distinction”

“Thank you for being so helpful and supportive during my first year. I believe that I would never be able to achieve what I have achieved without

your guidance and support!

I sincerely appreciate your time and patience to help me get here!”

OUR HIGHER EDUCATION PROGRAMMES AT A GLANCE

LEVEL		Programme	PT/ FT	DURATION	UCAS COURSE CODE	UCAS LOCATION CODE	COLLEGE CAMPUS	PAGE REF
4	HNC	HNC Business	FT	1 year	NN12	O25	Online	35
		HNC Construction and the Built Environment	PT	2 years	APPLY ONLINE	APPLY ONLINE	Oxford / Guildford	39
		HNC Electrical and Electronic Engineering	PT	2 years	APPLY ONLINE	APPLY ONLINE	Reading	51
		HNC Mechanical Engineering	PT	2 years	APPLY ONLINE	APPLY ONLINE	Reading	52
		HNC Digital Technologies	FT	1 year	IT01	IOT	Reading / Oxford	47
5	HND	HND Art and Design (Arts Practice)	FT	2 years	AD01	O25	Banbury	31
		HND Business and Management	FT	2 years	TBC	TBC	Oxford	35
		HND Digital Technologies (Top Up)	FT ^^	1 year	TBC	TBC	Reading	47
		HND Digital Technologies	FT	2 years	TBC	TBC	Reading / Oxford	47
		HND Electrical and Electronic Engineering (Top-up)	FT ^^	1 year	APPLY ONLINE	APPLY ONLINE	Reading	51
		HND Mechanical Engineering (Top-up)	FT ^^	1 year	APPLY ONLINE	APPLY ONLINE	Reading	52
	FOUNDATION DEGREE	Foundation Degree (Science) Animal Behaviour and Welfare	FT	2 years	DD28	O25	Merrist Wood	25
		Foundation Degree (Science) Animal Behaviour and Welfare	PT	2 years	APPLY ONLINE	APPLY ONLINE	Merrist Wood	25
		Foundation Degree (Science) Animal Science	FT	2 years	D3D3	O25	Merrist Wood	25
		Foundation Degree (Education) Children's Development and Learning	FT	2 years	X311	R12	Bracknell	63
		Foundation Degree (Education) Children's Development and Learning	FT	2 years	X314	R12	Merrist Wood	63
		Foundation Degree (Science) Companion Animal Behaviour	FT	2 years	C33D	O25	Merrist Wood	26
		Foundation Degree (Science) Counselling	FT	2 years	TBC	TBC	Guildford	43
		Foundation Degree (Arts) Educational Practice	FT	2 years	X102	O66	Oxford	63
		Foundation Degree (Arts) Furniture Design and Make	FT	2 years	W261	O66	Oxford	55
		Foundation Degree (Arts) Furniture Design and Make	PT	3 years	APPLY ONLINE	APPLY ONLINE	Oxford	55
		Foundation Degree (Science) Sports Coaching Fitness and Rehabilitation	FT	2 years	C613	O66	Oxford	59
		Foundation Degree (Science) Wildlife and Conservation	FT	2 years	D4D4	O25	Merrist Wood	26
		Foundation Degree (Science) Wildlife and Conservation	PT	2 years	APPLY ONLINE	APPLY ONLINE	Merrist Wood	26
		Foundation Degree (Science) Zoo Management	FT	2 years	CC30	O25	Merrist Wood	27
		Foundation Degree (Science) Zoo Management	PT	2 years	TBC	TBC	Merrist Wood	27

CONTINUED OVERLEAF ►

Note: Programmes shown maybe subject to change.
Please contact us for latest information.

^^ Full time students only come in once a week / day release (Top-ups).

APPLY ONLINE:
Complete online application at
activatelearning.ac.uk/higher

UCAS ENTRY:
Head to www.ucas.com to apply using
the course code and location code
shown in tables or where indicated

OUR HIGHER EDUCATION PROGRAMMES

AT A GLANCE

LEVEL	Programme	PT/ FT	DURATION	UCAS COURSE CODE	UCAS LOCATION CODE	COLLEGE CAMPUS	PAGE REF	
6	BSC /BA (HONS)	BSc (Hons) Animal Behaviour and Welfare (Top-up)	FT	1 year	D300	O25	Merrist Wood	25
		BSc (Hons) Animal Science (Top-up)	FT	1 year	S023	O25	Merrist Wood	25
		BSc (Hons) Animal Science (Top-up)	PT	2 years	APPLY ONLINE	APPLY ONLINE	Merrist Wood	25
		BA (Hons) Business and Enterprise (Top-up)	FT	1 year	NN19	O66	Oxford	36
		BA (Hons) Counselling (Top-up)	FT	1 year	B943	G70	Guildford	43
		BA (Hons) Education and Lifelong Learning (Top- up)	FT	1 year	X302	O66	Oxford	64
		BA (Hons) Furniture Design and Make (Top-up)	FT	1 year	W260	O66	Oxford	56
		BA (Hons) Furniture Design and Make (Top-up)	PT	2 years	APPLY ONLINE	APPLY ONLINE	Oxford	56
		BSc (Hons) Sports Coaching Fitness and Rehabilitation (Top Up)	FT	1 year	C360	O66	Oxford	60
		BSc (Hons) Wildlife and Conservation (Top-up)	FT	1 year	S039	O25	Merrist Wood	26
		BSc (Hons) Wildlife and Conservation (Top-up)	PT	2 years	APPLY ONLINE	APPLY ONLINE	Merrist Wood	26
		BSc (Hons) Zoo Management (Top-up)	FT	1 year	S098	O25	Merrist Wood	27
		BSc (Hons) Zoo Management (Top-up)	PT	2 years	APPLY ONLINE	APPLY ONLINE	Merrist Wood	27

6/7	PGCE	Professional Graduate Certificate in Education (PGCE)	PT	2 years	APPLY ONLINE	APPLY ONLINE	Oxford/ Reading	64
-----	------	---	----	---------	--------------	--------------	-----------------	----

- APPLY ONLINE:**
Complete online application at activatelearning.ac.uk/higher
- UCAS ENTRY:**
Head to www.ucas.com to apply using the course code and location code shown in tables or where indicated
- Note:** Programmes shown maybe subject to change. Please contact us for latest information..



OUR LOCATIONS

Six colleges conveniently located with a range of transport links.

BANBURY AND BICESTER COLLEGE

Broughton Road
Banbury
Oxfordshire
OX16 9QA

MERRIST WOOD COLLEGE

Holly Lane
Worplesdon
Guildford
Surrey, GU3 3PE

BRACKNELL AND WOKINGHAM COLLEGE

Church Road
Bracknell
Berkshire
RG12 1DJ

GUILDFORD COLLEGE

Stoke Road
Guildford
Surrey
GU1 1EZ

CITY OF OXFORD COLLEGE

Oxford City Centre Campus
Oxpens Road
OX1 1SA

Blackbird Leys Technology Campus
Cuddesdon Way
Oxford
OX4 6HN

READING COLLEGE

Kings Road
Reading
Berkshire
RG1 4HJ



READY TO APPLY?

View all our course information
activatelearning.ac.uk/higher



■ CITY OF OXFORD ■ COLLEGE ■

OUR CITY-CENTRE CAMPUS IS JUST A FIVE-MINUTE WALK FROM THE TRAIN STATION AND SERVED WELL BY BUSES AND DEDICATED CYCLE ROUTES, SO HOWEVER YOU CHOOSE TO GET HERE, IT'LL BE SAFE AND CONVENIENT.

Despite being in the centre of Oxford, the college's riverside location is a peaceful environment to study in with all the facilities you could need. You can focus on your studies in our well-stocked library, hit a workout before or after your lessons in our discounted gym, or get hair and beauty treatments at our salons for a reduced price. If you've skipped a meal in the rush to get here, you can grab something at our café or Waterside Restaurant. There's plenty of outdoor seating areas too, for enjoying the good weather, hopefully!

The campus is right next door to the Westgate shopping centre too! You'll have plenty of opportunities in your free time to head out and grab a snack or drink from one of the many cafés, or go shopping at the supermarket or many high-street stores.

Rycotewood Furniture Centre (city-centre campus)

We are proud to be home to specialist learning facilities, such as the renowned Rycotewood Furniture Centre, which furniture manufacturers visit every year. With live design briefs from the likes of Ercol, William Hands, and the American Hardwood Export Council, our students benefit from qualified feedback from industry professionals. Explore our furniture workshop through a virtual tour here.

Technology campus, Blackbird Leys

If you're interested in learning with the best equipment from experienced industry professionals, this is the best place for you. This high- specification facility supports training in a wide range of technological industries, including construction, engineering, IT, computing and motor vehicle. You'll be learning the practical expertise, skills and knowledge you'll need to go far in a range of exciting and fast-paced technological industries.

We are launching a new, state-of-the-art Institute of Technology. See page 45 for details!



■ BANBURY AND BICESTER ■ COLLEGE ■

BANBURY IS A HISTORICAL MARKET TOWN AND INDUSTRIAL CENTRE BY THE CHERWELL RIVER IN NORTHERN OXFORDSHIRE. OUR BANBURY AND BICESTER COLLEGE CAMPUS IS NEAR BANBURY'S TOWN CENTRE ON BROUGHTON ROAD.

Here, we have the kind of leading-edge workspaces you'll need to flex your creative talents. Recently, we've heavily invested in our photography, television and radio studios, and fully equipped Mac suites for graphic design. We also have a state-of-the-art virtual reality room! When your masterpiece is ready, there's an inspiring central atrium space for exhibitions and a cinema room for showcasing work.

Also on campus are industry-standard workshops, a well-stocked learning resource centre, an onsite convenience store, a café, and bright and airy learning spaces. There are also plenty of spaces on campus for quiet study or to unwind with friends.

Our learners benefit from the support of our industry-experienced staff, working closely with industry partners to develop the right learning programmes.

TAKE A 360° VIRTUAL TOUR OF
OUR BANBURY, BROUGHTON
ROAD CAMPUS



TAKE A 360° VIRTUAL TOUR
OF OUR CITY-CENTRE
CAMPUS, OXFORD



READING COLLEGE

THE CAMPUS IS A 15-MINUTE WALK FROM THE TOWN CENTRE WITH FANTASTIC LOCAL TRANSPORT LINKS, SO YOU WILL BE ABLE TO EXPERIENCE EVERYTHING READING HAS TO OFFER.

On campus, we offer the best possible facilities in a vibrant and welcoming environment. Whatever your area of study, we offer the specialist facilities you'll need to get the most from your investment in your education and future career, including creative art workshops, a TV and recording studios, performance spaces, theatre, garage, construction centre and fully-fitted training kitchens.

Your learning is guided by expert tutors in dedicated and well-equipped workshops and learning zones, kitted-out with the latest technology including Apple TVs, Macs, PCs, iPads, laptops, and Virtual Reality headsets.

Grab a drink or a bite to eat from one of several cafés and shops on campus, have lunch with friends in the canteen or gather your thoughts before class in the chill-out areas with comfy sofas. If you have the time, you can also unwind and get pampered with a variety of hair and beauty treatments at The Salon.

We are launching a new, state-of-the-art Institute of Technology. See page 45 for details!



**TAKE A 360° VIRTUAL TOUR
OF OUR KINGS ROAD
CAMPUS, READING**



BRACKNELL AND WOKINGHAM COLLEGE

BRACKNELL AND WOKINGHAM COLLEGE IS LOCATED IN THE HEART OF BRACKNELL ON CHURCH ROAD, JUST A TWO-MINUTE WALK FROM THE LEXICON SHOPPING CENTRE. THERE ARE ALSO CAMPUSES IN WOODLEY AND EARLEY.

Study conveniently in the heart of Bracknell with train and bus stations a short, 10-minute walk away. There are also various bus stops close to the campus itself and plenty of safe, on-site bicycle parking, so however you choose to travel here, the journey will be safe and convenient.

On campus, there's space for quiet study in our Learning Resource Centre or hanging out with friends in the many relaxing communal areas. Missed lunch, dinner, or you just need a snack to fire you up for your classes? You can grab a bite to eat or something to drink in our café or canteen. You can also visit our Harmony Salon for a variety of hair and beauty treatments.



**TAKE A 360° VIRTUAL TOUR
OF OUR CHURCH ROAD
CAMPUS, BRACKNELL**



GUILDFORD COLLEGE

OUR CAMPUS IS A SHORT WALK FROM THE RESTAURANTS AND SHOPS OF GUILDFORD TOWN CENTRE AND NEXT TO THE WIDE-OPEN SPACES OF STOKE PARK.

At Guildford College, students are at the heart of everything we do.

Our professional, dedicated, and industry-experienced teaching staff make learning fun, engaging, and we try our best to fit your education to your schedule.

Furthermore, Our comprehensive student support team can assist with applications, securing funding, careers guidance and personal tutoring, to name just a few services!

On campus, there's space for quiet study in our Learning Resource Centre or hanging out with friends in the many spaces and communal areas. You can grab a bite to eat or something to drink in our onsite café or canteen! If time allows, you could also enjoy a treatment or two in our vibrant hairdressing salons and tranquil beauty therapy rooms.

360°

**TAKE A 360° VIRTUAL TOUR
OF OUR STOKE ROAD
CAMPUS, GUILDFORD**

MERRIST WOOD COLLEGE

JUST A SHORT BUS RIDE FROM GUILDFORD TOWN CENTRE, WE ARE A MULTI-AWARD-WINNING COLLEGE THAT SPECIALISES IN THE LAND-BASED INDUSTRIES.

On the 400-acre estate with woodlands, wetlands, livestock, gardens and grasslands, there are outstanding, specially designed facilities for floristry, horticulture, landscaping, and garden design. These include a campus nursery, workshops, and design studios. We are widely recognised for our many successes at RHS Chelsea and Hampton Court Flower Shows. Work from the estate has been seen across the world!

For sports enthusiasts, we have football and rugby pitches, and access to an adjoining 18-hole golf course.

And we are home to a large, diverse range of animals in our Animal Management Centre, with specialist areas for large, small, and exotic animals. These include snakes, spiders, sheep, cows, ferrets, rabbits, birds of prey and many more!

We also have a comprehensive student support team that can assist with applications, securing funding, careers guidance, and personal tutoring, and much more! We also provide accommodation at our onsite halls of residence.

360°

**TAKE A 360° VIRTUAL TOUR
OF OUR 400-ACRE
WORPLESDON ESTATE**



Our programmes are arranged according to levels. Levels refer to learning stages and guide you through our career pathways maps. Our Higher Education programmes typically run from Level 4 (Higher National Certificates and Higher Apprenticeships) through Level 5 (Higher National Diplomas and Foundation Degrees) to Level 6 (Bachelor of Arts or Science Honours Degrees).

► **HIGHER APPRENTICESHIP**

Set at a Level 4 qualification (the next step up from A Levels) or above, higher apprenticeships are work-based programmes that include part-time study at college.

► **HIGHER NATIONAL CERTIFICATE (HNC)**

An HNC typically takes one year to complete if studying full-time or two years part-time and is generally equivalent to the first year of university. It can be used to progress to a Higher National Diploma (HND).

► **HIGHER NATIONAL DIPLOMA (HND)**

An HND is equivalent to the second year of university and is a work-related course.

► **FOUNDATION DEGREE (FDA OR FDSC)**

A Foundation Degree is the equivalent to the first two years at university and is a combination of workplace learning and studying at college.

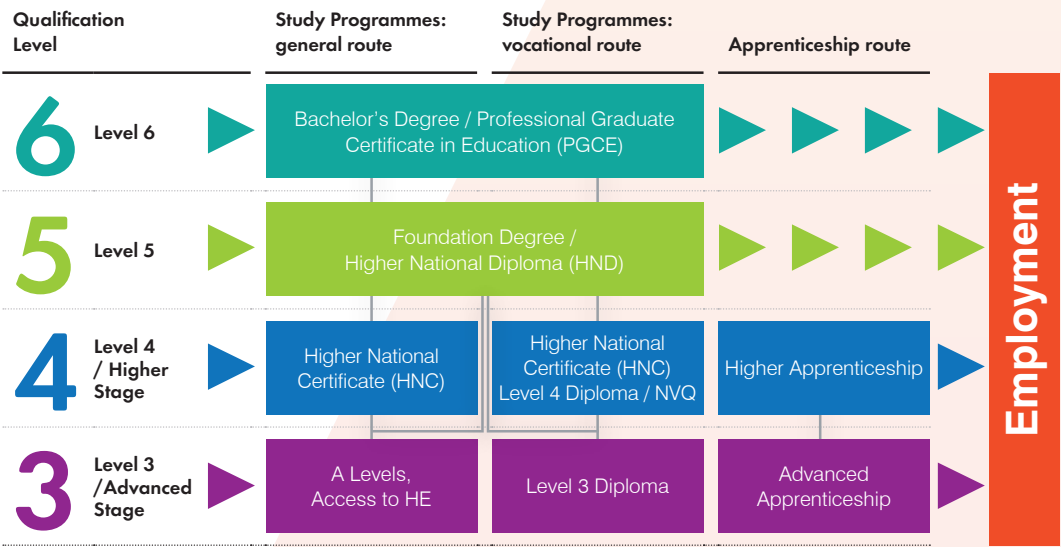
► **BACHELOR’S DEGREE**

This is the most common type of university degree, taking three to four years to complete on a full-time basis. Foundation Degrees and HNDs can lead on to Bachelor Degree courses.

► **PROFESSIONAL GRADUATE/ POST GRADUATE CERTIFICATE IN EDUCATION (PGCE)**

Professional Graduate Certificate in Education is for those wishing to become a teacher in the post-compulsory sector or an advanced pathway for those completing a Diploma in Education and Training level 5.

The Postgraduate Certificate in Education (Level 7) provides training in order to allow graduates to become teachers within maintained schools. In addition to gaining the PGCE qualification itself, those who have successfully completed the course are recommended for qualified teacher status (QTS).



HIGHER EDUCATION LEVELS

EXPLAINED

A career in perpetual demand.

The animal care industry is worth over £1 billion to the UK economy and boasts over 13,000 businesses, from pet shops and sanctuaries, to zoos and wildlife parks. Over 370,000 people work within animal occupations in the UK.

A purpose built learning centre with industry-experienced tutors

Activate Learning provides training for those wishing to become a Zoologist, Veterinarian, Marine Biologist, Guide Dog Trainer, Wildlife Rehabilitator, Animal Shelter Manager, among other careers.

Our course tutors are passionate and knowledgeable, with industry-related experience and have great connections with local and global organisations such as the RSPCA, Battersea Dogs' and Cats' Home, Chessington Zoo, Tilgate Nature Centre and more.

Merrist Wood

Our Animal Management centre has a zoo licence, giving you the opportunity to develop skills and knowledge in a realistic, professional environment. Opportunities to go on visits and trips

to local zoos, RSPCA centres, veterinary surgeries and wildlife parks are interwoven with the practical, employment-focussed training on campus.

Our centre has an arid biome, tropical biome, and nocturnal room, allowing you to study and care for a wide range of animals in a near-natural environment. We also have a fully functioning farm with rare breed sheep and cows, pigs, goats, llamas, donkeys, chickens, ducks, a skunk, and many more additions to the collection planned soon!

Study locally, go far

Our coveted work experience programmes have included contributing to conservation work and local community projects, working with chimpanzees in West Africa, dolphins in the Bahamas; Compassion in World Farming, orang-utans in Borneo, wild otters in Cornwall, dog trainers and many others.



My course is varied and interesting, no two days are the same and my tutors are the most caring, supportive people. Always there to listen if you have a problem and happy to take the time to chat things through if you're finding things tricky.

– Chloe

A CAREER IN ANIMAL MANAGEMENT

The animal care industry is worth over

£1 billion

to the UK economy

ANIMAL MANAGEMENT

Foundation Degree (FdSc) in Animal Behaviour and Welfare

Campus: Merrist Wood

Awarding University Partner:
Kingston University

FT

PT

Develop a fascinating insight into the behaviour and welfare of a range of animal species and application of theory to maintain animal welfare. This includes, but is not limited to, companion animals, production livestock, zoos and aquaria, and free-ranging wild animals. You will study contemporary and classical philosophical literature related to animal consciousness and their moral status to help make more considered choices with regards to animal welfare across the industry. Optional trips include South Africa, Borneo or Jersey depending on your chosen Research Project.

Bachelor of Science (Hons) (Top-up) in Animal Behaviour and Welfare

Campus: Merrist Wood

Awarding University Partner:
Kingston University

FT

PT

Designed for students who have already completed a Foundation Degree in Animal Behaviour and Welfare or equivalent qualification. It allows for more in-depth specialist knowledge development and the opportunity for research into a chosen field of study. You will assess animal welfare and behaviour in a range of settings, including farming, zoos, the leisure and entertainment sectors, laboratory and domestic environments.

Foundation Degree (FdSc) in Animal Science

Campus: Merrist Wood

Awarding University Partner:
Kingston University

FT

Enhance your understanding of the internal workings of many fascinating animal species. Animal science focuses on the scientific disciplines that underpin the management of captive, productive, and companion animals. This will include, but not be limited to, animal health, biology, behaviour, nutrition, and anatomy.

Bachelor of Science (Hons) (Top-up) in Animal Science

Campus: Merrist Wood

Awarding University Partner:
Kingston University

FT

PT

This programme enables a deeper engagement with the scientific disciplines that underpin the management of captive, productive and companion animals. It will help you to build on previous knowledge and experience of the animal sciences, and further develop your skills in applying scientific principles, enabling the development of key skills for employment.

Kingston
University
London

Foundation Degree (FdSc) in Companion Animal Behaviour

Campus: Merrist Wood

Awarding University Partner:
Kingston University

FT

PT

Investigate the behaviour and training of companion animals and the application of theory to improve problem behaviours. Designed to prepare you for a career in the management of companion animal behaviour. However, in Year 1 of the course, students can explore content relating to other animal species. As many people working in the companion animal industry are business owners, this is incorporated into the course.

Foundation Degree (FdSc) in Wildlife and Conservation

Campus: Merrist Wood

Awarding University Partner:
Kingston University

FT

PT

You'll investigate the importance of conservation and current issues faced within this field supported by the study of a wide range of species in the college's Animal Management Centre and in relevant commercial settings through visits to local animal collections. Underpinning theory is delivered in the classroom. Industrial experience, assessed through the professional development module over two years, will be undertaken in a related field and will give you invaluable experience in your specialism with 200 hours to be undertaken each year at an animal collection or other relevant location.

“ I TEACH ON THE FDSC AND BSC ZOO MANAGEMENT PROGRAMMES, A BLEND OF PRACTICAL AND THEORETICAL ELEMENTS THAT GIVE OUR LEARNERS A REAL CURRENCY IN THE WORK ENVIRONMENT. THE CAMPUS IS AN INSPIRATIONAL CLASSROOM AND I AM PARTICULARLY PROUD OF OUR ANIMAL MANAGEMENT CENTRE AND OF RARE BREED SURVIVAL TRUST (RBST) ACCREDITED FARM. ”

Luke Gates
HE Tutor

HOW TO APPLY

See course codes in table on pages 9-12

FT Via www.UCAS.com

PT Online at activatelearning.ac.uk/higher

Course modules shown are indicative only and may be subject to change.

Bachelor of Science (Hons) (Top-up) in Wildlife and Conservation

Campus: Merrist Wood

Awarding University Partner:
Kingston University

FT

PT

You will develop essential skills for working conservationists and ecologists. You will develop your expertise through research, surveying and data collection, and apply knowledge of ecosystems to environmental issues and conserving wildlife.

Foundation Degree (FdSc) in Zoo Management

Campus: Merrist Wood

Awarding University Partner:
Kingston University

FT

PT

Develop a fascinating insight into the behaviour and welfare of a range of captive wild animal species and apply theories learnt to maintain and improve animal welfare. The primary focus of this course is on species house within zoos and aquaria however careers are not limited to these. There is also scope for you to explore wildlife conservation and the focus within zoos.

**Kingston
University**
London

Course modules shown are indicative only
and may be subject to change.

Bachelor of Science (Hons) (Top-up) in Zoo Management

Campus: Merrist Wood

Awarding University Partner:
Kingston University

FT

PT

This programme seeks to expand your knowledge and understanding of wild animals and their captive management and behaviour beyond the scope of the Foundation Degree. On successful completion, students will be able to acquire, interpret and analyse information and apply a critical understanding of the appropriate context for its use; explain the behavioural and welfare needs of animals and how management systems meet those needs; recognise and use appropriate theories, concepts and principles from a range of disciplines.

“

**THE TEACHERS
ARE VERY
APPROACHABLE
AND ALWAYS
KNOWLEDGEABLE
AND HELPFUL**”

Anonymous student, FdSc Wildlife
and Conservation 2019/20
Internal student satisfaction survey

HOW TO APPLY

See course codes in table on pages 9-12

FT Via www.UCAS.com

PT Online at activatelearning.ac.uk/higher

A CAREER IN ART AND DESIGN

A number of exciting careers in the creative sector exist, such as photographer, events manager, fine artist, and creative director, among others for those studying Art and Design.

Job projections for visual arts and design roles such as arts officers, graphic designers, photographers, and AV operators are strong with well over 2,000 new annual job openings forecast across each of these occupations.

Ready for work

The skills that you will learn on our visual arts and design pathway, such as blended technical and creative skills, collaborative interdisciplinary working, and enterprise are of increasing importance across the job market. Whether you're a complete beginner or a practicing artist, our professional and experienced tutors can support you with learning new skills, expanding your knowledge, and polishing your portfolio.

The following programme accredited by Pearson is available in 2022-23:

Art and Design Higher National Diploma

Broaden your horizons

The Arts Practice BTEC Level 5 Higher National Diploma is designed to build on students' existing skills to further develop their own creative vision. The course provides a broad base of relevant art and design skills that can be used within a career in the Arts as either a practising artist/designer, or used for successful progression onto a diverse range of higher education degree programmes.

You will learn in our excellent facilities and studios, doing practical, assignment-based learning, supported by reflection and evaluation. As well as regular visits to museums and galleries, your course may include an overseas trip. Recent trips have included visits to New York, Berlin, and Prague.



ART & DESIGN

Higher National Diploma in Art and Design

Campus: Banbury

Awarding Partner: Pearson

FT

Working closely with specialist tutors you will be able to study within a range of creative pathways developing your technical skills. Collaborative practice is key in developing employability and will be part of the studies you will undertake.

The possible pathways include: Fine Art, Fashion, Graphic Design, Photography and 3D Design. You will be taught practical studies in using digital platforms, moving image and still image to support your career development.



HOW TO APPLY

See course codes in table on page xx

FT Via www.UCAS.com

PT Online at activatelearning.ac.uk/higher

Course modules shown are indicative only and may be subject to change.



There are around six million private businesses in the UK, more than 99% of which are small or medium-sized businesses.

The number of businesses registered in the UK has increased on average by 3% per year over the past 20 years. With nearly 178,000 annual openings for new jobs, organisations are searching right now for skilled team members and decision-makers within a variety of different business functions.

Roles at the core of the economy

Develop your entrepreneurial skills and prepare for the challenge of growing a business in highly-competitive global markets. With more than five million businesses in the UK, many organisations are searching right now for skilled team members and decision-makers within a variety of different business functions. There are significant employment opportunities in this sector, with the number of business-related roles across England forecast to rise by approximately 150,000 in the next eight years.

Make yourself indispensable

Our programmes provide the skills and knowledge you need to become an entrepreneur or enter roles within finance, HR, or Marketing.

A practical course, geared towards finding employment

A career pathway in business offers exciting and rewarding opportunities to work closely with top employers in Oxfordshire. The programmes equip you with the practical and technical skills needed for rewarding careers in business across many different sectors. You'll be able to undertake work experience placements at local organisations and thereby gain practical know-how and make connections in your chosen sector.



Since I've been looking for a new job in accountancy, I've really come to realise that the qualification I've got covers so much of what people are looking for. To see job descriptions being advertised that are asking for so much of exactly what I've been covering on the course makes me feel really confident applying for jobs and going for interviews. I had heard before that the course was designed with the help of local employers, but now I can really see that I've been given exactly the skills and knowledge that people are looking for in the job market.

– Carly

A CAREER IN BUSINESS AND ENTERPRISE

Nearly
178,000
annual openings for
new jobs

BUSINESS AND ENTERPRISE

NEW FOR 2021-22

Higher National Certificate in Business

Campus: ONLINE only

Awarding Partner: Pearson

FT

The HNC in Business will provide a strong foundation in business, increasing your earning potential and job prospects in business sectors. This aimed at students who would like a broad knowledge of all Business concepts.

As the HNC is part of the Qualifications Framework (RQF) it has transferable credits (a minimum of 120). On successful completion of the HNC students will be able to progress to our online HND conversion program which is a 1-year full time (2 year part-time) programme specifically for our Online students.



Higher National Diploma (HND) Business and Management

Campus: City of Oxford

Awarding University Partner:
Pearson

FT

The HND is a 2 year programme designed to further your knowledge and understanding of the fundamentals of business and the range of contexts and environments that organisations operate in. Based on an intensive 2 day a week timetable (with set home study tasks) the HND focuses on aspects of business management, you will explore core business disciplines alongside units that focus on business management themes.

The HNC is designed to meet the needs of individuals looking to take on a managerial role working in today's changing economic landscape. On completion students can apply to progress to the BA (Hons) Business and Enterprise (Top-Up).



Bachelor of Arts (BA Hons) (Top-up) in Business and Enterprise

Campus: City of Oxford

Awarding University Partner:
Oxford Brookes University

FT

This top-up degree provides a practical business education for entrepreneurial students who wish to further their knowledge of business and enterprise. The programme has been developed in a way which explores each of these two strands progressively, whilst maintaining a holistic view of business within various contexts.

There are four single and two double modules in the programme, all compulsory. The Dissertation and the Enterprise and Entrepreneurship Project are compulsory alternatives. You will need to select to undertake one or other of these as a compulsory module.

OXFORD
BROOKES
UNIVERSITY

HOW TO APPLY

See course codes in table on pages 9-12

FT Via www.UCAS.com

***PT** Via [Oxford Brookes University](https://OxfordBrookesUniversity)

PT Online at activatelearning.ac.uk/higher

Course modules shown are indicative only and may be subject to change.



A CAREER IN CONSTRUCTION

The wider construction sector, including contracting, materials manufacturing and associated professional services, employs around 3.1 million people, which equates to roughly 9% of the UK workforce.

Industry expertise, imparted in high-quality facilities

Prepare for an exciting career in the construction and building trades and gain practical skills and experience alongside industry experts in our high-quality facilities. Our specialist programmes of part-time studies can complement industrial skills and experience and also provide an opportunity to specialise in several areas of construction.

Having gained your qualification, you could progress into roles in construction management, site supervision or become a technician. From tradespeople and site managers to quantity surveyors and architects, the construction industry offers a wealth of career opportunities that require a variety of different skills, interests, and abilities.

Students will also gain membership of professional bodies such as the Chartered Institute of Building (CIOB) or Institute of Civil Engineers (ICE).

Well paid, clearly defined careers

The sector pays well and there are opportunities to progress from apprenticeships to self-employed trade specialists, or project-manager roles in multi-national companies. Whatever your skills and interests, our teachers have decades of combined experience within construction and will share with you the knowledge and expertise you need to succeed.

Choose from the following Higher Education programmes accredited by Pearson and discover your route into Construction and the Built Environment or Civil Engineering in 2022–23:

- ▶ Civil Engineering Higher National Certificate.
- ▶ Construction and the Built Environment Higher National Certificate.
- ▶ Construction and the Built Environment Higher National Diploma.

Our career pathways in construction or civil engineering offers exciting and rewarding opportunities to work closely with top industry employers in Oxfordshire, Berkshire, and Surrey.



CONSTRUCTION

Higher National Certificate in Construction and the Built Environment

Campus: Guildford and City of Oxford
(Blackbird Leys Campus)

Awarding Partner:
Pearson

PT

To develop your career, you will learn the key professional, managerial, administrative and technical areas of the construction industry. It is intended to enable you to take further responsibility for design, research work and site operations. The first year is common to all pathways. In the second year you specialise in production management, quantity surveying, building surveying or architectural design.



Previous employer-led projects our students have taken part in include:

Skanska, a design, building and engineering company, set a project to design a new roundabout junction. Teams made designs for a junction in Harwell that would accommodate increased traffic and the needs of pedestrians.

Creating a pre-tender package for a new science-park development in partnership with mentors from Beard Construction, an award-winning construction company. The project involved fact-finding visits to the real-life development site, currently under construction.

HOW TO APPLY

See course codes in table on pages 9-12

FT Via www.UCAS.com

PT Online at activatelearning.ac.uk/higher

Course modules shown are indicative only and may be subject to change.

If you are interested in helping others and enjoy listening to people tell their stories, counselling could be for you.

Counselling for every level of interest

Whether you are looking to start the first level of training as a professional counsellor or learn counselling skills to improve your professional and personal relationships as part of your own personal development, we have a range of opportunities to help you. We also offer Level 4 courses for continued professional development.

Teaching of this subject at Activate Learning is through a professionally qualified team who practice as psychotherapeutic counsellors or psychotherapists. Courses also offer a study visit and a programme of visiting speakers. On our programmes, you will be able to establish effective therapeutic relationships with clients and work with a broad variety of issues in a safe and effective way. The courses are highly interactive, combining formal teaching with individual, small- and whole-group activities.

Professional accreditation

These programmes will provide skills and learning to become a British Association for Counselling and Psychotherapy (BACP) registered member and work with adult clients. Graduates can apply for individual accreditation with the BACP after additional supervised practice hours, post-programme.

Choose from the following programmes accredited by University of Greenwich and discover your route into Counselling in 2022–23:

- ▶ Bachelor of Arts (Hons) in Counselling.

A career pathway in counselling offers exciting and rewarding opportunities to become a BACP accredited counsellor and practitioner.



A CAREER IN COUNSELLING

COUNSELLING

Foundation Degree Science (FdSc) in Counselling

Campus: Guildford

Awarding University Partner:
tbc

FT

This programme focuses on the therapeutic relationship as the main catalyst to healing, wellbeing, growth and development.

There is a particular emphasis on the use of the counsellor's self and of the client-counsellor relationship in the therapeutic work. A key theme is the development of the trainee's self-awareness and impact of self on others and bringing that awareness into the 'here and now' within the client-counsellor relationship. The programme provides a unique learning opportunity to enhance skills, increase knowledge, develop understanding and prepare you for employment in the counselling profession (paid employment or private practice) and for membership of BACP.

Accredited by:



Bachelor of Arts (Hons) in Counselling

Campus: Guildford

Awarding University Partner:
University of Greenwich

FT

This programme has been specifically designed for practising counsellors already qualified to diploma or foundation degree level and working in paid employment, private practice or a voluntary setting. It provides a unique opportunity for counsellors to deepen their understanding of counselling theory and practice, client issues and how to work with them, undertake a literature review in an area of their own choosing and gain a degree at the same time. It also provides a forum where counsellors from a variety of orientations and backgrounds will be able to share information and experience to their mutual advantage.

As awareness of mental health issues gradually increases in the public consciousness and more people seek professional help and advice, there is a rise in demand for counselling and for professionally qualified counsellors. Employers are increasingly asking for counsellors with a degree in counselling, or with BACP accreditation or both.





BE ANYTHING READY

SOUTH CENTRAL INSTITUTE OF TECHNOLOGY DIGITAL PATHWAYS

Welcome to the South Central Institute of Technology. Choose a qualification with us, uncover your potential, and prepare yourself for employment now – and in the future.

Who are we?

We are the South Central Institute of Technology – providing higher level technical qualifications for a new generation of digital visionaries.

In a time where the world and careers are shifting, keeping up has never been more important. As a project working with a consortium of world-leading brands including Microsoft, KPMG, McAfee, Milton Keynes College, and Cranfield University – we're always one step ahead of the game.

As a hub of innovation and world-leading technological advancements, we have relentless dedication to future-proof the lives and skills of learners. At South Central IoT, you can be anything ready.

What are Institutes of Technology?

Institutes of Technology have been designed to create higher level technical qualifications, in partnership with employers to increase productivity and raise the

standards of university level technical education. At Activate Learning, our colleges in Oxford (Technology Campus) and Reading will be home to the South Central IoT.

Your options

What programmes and qualifications can you complete with us?

At City of Oxford College and Reading College we are offering programmes within Information Communication, Software Development, Data Analysis, Programming and Cyber Security. Depending on how you like to learn best, we offer HNCs and HNDs, as well as Higher Apprenticeships.

HIGHER NATIONAL CERTIFICATE (HNC)

A Higher National Certificate (HNC) is equivalent to the first year of university level study, delivered full time in one year or part time over two years. A HNC can allow progression onto a Higher National Diploma. You may also hear this being referred to as a Level 4 qualification.

HIGHER NATIONAL DIPLOMA (HND)

A Higher National Diploma (HND) is equivalent to the second year of university level study and can be delivered full time or part time. If you have already completed a HNC in a relevant subject, you can apply directly for the HND. You may also hear this being referred to as a Level 5 qualification.

HIGHER APPRENTICESHIP

Higher Apprenticeships are work based programmes which include the study of a recognised Level 4 or 5 qualification. They take at least a year to complete but can take up to four years depending on the qualification and employer.

Five reasons to choose SCIoT

EMPLOYER PARTNERSHIPS AND PROJECTS

Our learners will work on live projects with our partner organisations like Microsoft, McAfee, and CCL Evidence Talks. They'll get to grips with the issues that impact real businesses, working with industry experts and making connections - working with local businesses and having an impact on the community.

QUALITY TEACHING AND SUPPORT

We know a lot of education institutions say this – but we really mean it. We have a range of staff to support you on your journey who have a wealth of industry experience. They're here to help you achieve your goals no matter how big they are.

BESPOKE QUALIFICATIONS

We want you to have the best experience, with a qualification that will provide you with the skills needed now, and in the future. Our qualifications have been tailored to suit the needs of international and local employers, so when completed, you'll have a world of choice available to you – you'll be anything ready.

ADMISSIONS PROCESS

When it comes to joining us, we want to see passion, dedication and commitment to learning about digital technologies at a higher level. Whatever the qualifications you have, we'll find a way for you to join us and support you at every step. This means you don't need to feel limited by grades, academic qualifications or experience. It all starts with a conversation to find out about your interests and aspirations.

COST

You can save around £3,000 per year as our Higher National qualifications cost less than most university equivalents. That means you'll be getting high quality teaching, direct access to employers, transferable skills, and a qualification equivalent to the first or second year of university for a lower price – big wins all round.

Case study – Deborah Mungai HNC Digital Technologies Cyber Security

WHAT ROUTE DID YOU TAKE TO SCIoT?

After finishing my A Levels at school, I began exploring options that would work with my passion for tech. I reviewed universities, apprenticeships and South Central IoT.

WHAT WOULD YOUR ADVICE BE TO SOMEONE INTERESTED IN STUDYING AT SCIoT?

To those who may have finished school or might not know what they want to do, I would advise trying out the South Central Institute of Technology. It gives you the option to study more before you decide if you want to continue with higher education, begin an apprenticeship or go straight into work. It can also help you decide what area of Digital Technologies and Games and Animation you want to specialise in.

I can't say how much I love being part of South Central Institute of Technology, it has given me so many opportunities and really opened my eyes to how I can achieve my goals.

WHAT CAREER DO YOU PLAN TO GO INTO AFTER COMPLETING YOUR QUALIFICATIONS?

After finishing my course, I want to get more experience in Cyber Security and work for a big company like Microsoft or Google – that would be a dream come true! I generally want to work and gain experience across different sectors, I could even help educate others.

How to apply

The easiest way to apply is through our website – southcentraliot.ac.uk

Simply choose the qualification or course you wish to apply for and follow the process. Then, you just have to submit your details and wait to be offered an interview – it's as easy as that.

DIGITAL TECHNOLOGIES

HNC Digital Technologies

Campus: Reading and Blackbird Leys Technology campus, Oxford

FT

This programme will equip you with the knowledge and confidence to work across different digital technologies functions. The Level 4 Higher National Certificate in Digital Technologies provides a solid grounding which you can build on if you decide to continue your studies to Level 5 Higher National Diploma (Digital Technologies) or onto further higher-level study at university.

The programme is designed to be studied full-time over one academic year, three days a week. The HNC in Digital Technologies is a qualification of a minimum of 120 credits, including;

- ▶ Professional Practice in the Digital Economy
- ▶ Innovation and Digital Transformation
- ▶ Cyber Security
- ▶ Programming
- ▶ Big Data and Visualisation
- ▶ Cloud Fundamentals

Students will then elect two further units;

- ▶ Security
- ▶ Data Analytics
- ▶ Networking
- ▶ Database Design and Development
- ▶ Software Development Lifecycles

Upon successful completion of this course, you will be perfectly positioned to further your learning by studying Level 5 HND, University or employment. Career opportunities could include becoming a cyber security specialist, software developer, data analyst, network technician, software tester, business analyst, risk analyst, lead developer, network engineer, or systems engineer to name a few.

HND Digital Technologies (1 Year Top-up from HNC or 2 Years)

Campus: Reading

FT

The Level 5 units give students the opportunity to specialise in a digital-technology-related occupational areas and prepares students to move on to specific areas of digital technologies at Level 6 or enter employment.

The top-up programme following the HNC is designed to be studied full-time over one academic year, three days a week. The HND in Digital Technologies is a qualification of a minimum of 120 credits, including;

- ▶ Business Intelligence
- ▶ Internet of Things
- ▶ Emerging Technologies
- ▶ Digital Sustainability
- ▶ Digital Technology as a Catalyst for Change
- ▶ Pitching and Negotiation skills

Students will then elect two further units;

- ▶ Data Structures and Algorithms
- ▶ Advanced Programming
- ▶ Applied Security in the Cloud
- ▶ Work Based Learning

The two year HND programme consists of both the HNC and HND top up units.

Students will have a sound understanding of the principles in their area of specialist study and will know how to apply those principles widely in the area of digital technologies. Students will be able to develop and apply their own ideas to their studies, to deal with uncertainty and complexity, explore solutions, demonstrate critical evaluation and use both theory and practice in a wide range of digital technology situations.

GET IN TOUCH

Website: southcentraliot.ac.uk

 @SouthCentralIOT

 @SouthCentralIOT



@SouthCentralIOT



South Central Institute of Technology



South Central IOT



Engineers are always in demand and are successfully employed, or self-employed, across the private, public, and not-for-profit sectors.

In fact, as of 2021, 18% of the UK working population works in engineering, and at least 15% of the working population in every region are in engineering jobs.

In demand, across all industries

From aerospace to agriculture, food packaging to pharmaceuticals, and everything in between, organisations in those industries, from micro-SMEs to large, multi-national companies need the services of skilled engineers. So much so, that as of 2021, there are 1.36 million job roles and 44,000 openings per year in the Engineering sector across the UK. This sector is especially important in South East England, with 6% more job roles in the region compared to the UK average.

Make a sound investment in yourself

Higher National qualifications are internationally recognised qualifications for engineering technicians that will enhance your career prospects. With a HNC or HND under your belt, you will be able to prove to potential employers that you have the ability to take personal responsibility for situations and show good judgement when asked to make difficult decisions. Our qualifications are linked to the standards of Professional Bodies (where appropriate) and can provide progression towards professional status or entry to the later stages of an appropriate degree.

Our qualifications are designed to give you the best and most practical education at every opportunity to enable you to enter employment or perform more effectively in your chosen field and climb to the next stage of your career!

Choose your route into Engineering in 2022-23 from the following Higher Education programmes accredited by Pearson:



- ▶ Higher National Certificate in Electrical and Electronic Engineering.
- ▶ Higher National Diploma (Top-up) in Electrical and Electronic Engineering.
- ▶ Higher National Certificate in Mechanical Engineering.
- ▶ Higher National Diploma (Top-up) in Mechanical Engineering.

A CAREER IN

ENGINEERING



as of 2021,
18%
of the UK
working population
works in engineering

ENGINEERING

Higher National Certificate in Electrical and Electronic Engineering

Campus: Reading

Awarding Partner: Pearson

PT

Build up your engineering skills and work towards becoming a professional engineer. This course provides a specialist vocational programme with strong work-related emphasis. Students will build both academic and practical skills with a range of practical building projects throughout the two years including: ladder logic systems, and monitoring systems using mobile phones.

Higher National Diploma (Top-up) in Electrical and Electronic Engineering And HND (top-up) Mechanical

Campus: Reading

Awarding Partner: Pearson

FT

The course is designed to teach you how to evaluate the appropriateness of different approaches to solving problems and give you pathways into relevant occupational areas or onto degree-level study.

Higher National Certificate in Mechanical Engineering

Campus: Reading

Awarding Partner: Pearson

PT

Build up your engineering skills and work towards becoming a professional engineer with this course. This programme will develop the skills and knowledge that will allow you to bring together engineering elements in project-based assignments related to the needs of the engineering sector.

You will experience a specialist vocational programme, linked to professional body requirements with a strong, sector-related emphasis on practical skills alongside the development of knowledge and understanding.

HNCs are recognised by employers and allow direct progression into employment. You will study with a teaching team of dedicated, experienced individuals who have expertise in engineering and professional development. You will develop a range of skills, techniques and attributes essential for successful performance in working life and be able to make an immediate contribution to employment.



^^ Full time students only come in once a week / day release / this applies to both HND (Top-ups).

HOW TO APPLY

See course codes in table on pages 9-12

FT (Top-ups only) Online at activatelearning.ac.uk

PT Online at activatelearning.ac.uk/higher



A CAREER IN FURNITURE

The UK furniture, bed, and furnishings manufacturing industries are substantial, yet also offer exciting opportunities for self-employment or working in boutique workshops.

Furniture manufacturing is one of the top three divisions driving manufacturing growth in the UK and as of 2021, there are 72,547 jobs across the UK related to wood crafts and furniture making, with 2,281 openings per year. This sector is set to increase jobs by 3.5% in the next five years.

It's what you know, who you know, and where you've trained

If you have a passion for furniture production and want to broaden your skills and experience, our programmes can help you create a career in this richly rewarding industry. Rycotewood Furniture Centre is a renowned centre of excellence, with a wide range of furniture manufacturers visiting every year. Live design briefs from the likes of William Hands, The Furniture Makers' Company, Tormek, Axminster Tools, and Workshop Heaven, giving our learners unique opportunities to gain feedback from industry professionals.

Excellent workshop facilities are combined with a skilled and knowledgeable teaching team to offer an exceptional experience in furniture education. But don't just take our word for it: our students regularly receive the City and Guilds Medal of Excellence, and individuals on the degree programme have won the prestigious Alan Peters Award, Mixology Designer of the Year, and Young Furniture Makers' Design and Bespoke Awards.

Choose your route into the Furniture Industry in 2022-23 from the following higher education programmes accredited by Oxford Brookes University:

**OXFORD
BROOKES
UNIVERSITY**

- Foundation Degree (FdA) in Furniture Design and Make.
- Bachelor of Arts (Hons) (Top-up) in Furniture Design and Make.

A centre for excellence

The Rycotewood Furniture Centre at City of Oxford College has been actively engaged in the training and education of students entering the furniture industry for more than 70 years, with successful delivery of higher education for over twenty years.

In this time, it has actively engaged with employers with respect to placement, bespoke training, and in seeking external advice in the design of its programmes. It has established a reputation beyond its local roots and enjoys a position of national pre-eminence in the field, located in Oxford and close to the UK's traditional furniture-making industry of High Wycombe.

In the HE workshop, you will be assigned your own work bench and space, with access to a dedicated IT suite, a design studio, as well as veneering, spray-finishing, upholstery, and wood-machine workshops.

I'D HEARD A LOT OF GOOD THINGS ABOUT RYCOTEWOOD. I HEARD THAT IF YOU WANT TO BE A WOODWORKER, THEN THAT'S THE PLACE TO GO. I CAME FOR AN OPEN EVENT WHERE I SPOKE TO THE STAFF AND STUDENTS. I WAS REALLY IMPRESSED WITH THE FACILITIES AND WHAT WAS STUDIED ON THE PROGRAMME, SO I SIGNED UP!

Sean

Foundation Degree in Furniture: Design and Make



FURNITURE

Foundation Degree (FdA) in Furniture Design and Make

Campus: City of Oxford

Awarding University Partner:
Oxford Brookes University



The Foundation Degree (FdA) Furniture: Design and Make is linked closely with the furniture industry and aims to inspire creativity in design and excellence in craftsmanship through work related study.

Learning in the Rycotewood Furniture Centre, our students develop skills as creative thinkers and makers, who innovate furniture craft through the exploration of materials and skills.

The programme balances design, craft and theory to nurture furniture designers and makers of excellent ability who can progress to employment or further study with a broad understanding of the processes involved in the design and craft of furniture.

**OXFORD
BROOKES
UNIVERSITY**

Bachelor of Arts (BA Hons) (Top-up) in Furniture Design and Make

Campus: City of Oxford

Awarding University Partner:
Oxford Brookes University



Develop a career in Furniture Design and Make with this work-related Honours top-up progression route. The programme is aimed at aspiring furniture designer-makers and provides a work-related Honours top-up progression route for holders of a Foundation Degree in Furniture Design and Make.

The main aim of this programme is to develop highly competent graduates who have proficient knowledge in the discipline and give them the professional skills they need for a career in furniture designing and making.

It consists of two key elements that focus on independent and industry-linked projects. The independent projects are linked together to provide a holistic experience, first establishing a self-initiated brief through a significant written research project and then linking this directly to a major design and make project.

Course modules shown are indicative only and may be subject to change.

HOW TO APPLY

See course codes in table on pages 9-12

FT Via www.UCAS.com

PT Via Oxford Brookes University



As of 2021, there are over 300,000 people employed in the UK in sports-related job roles, with 12,500 new openings per year.

Some of the most popular roles in this sector are for sports coaches, instructors, and officials, with one in ten graduates employed as secondary education teaching professionals.

Be a part of a world-beating team

The UK has emerged as the leading force in driving innovation forward within the sports industry. Ever-more advanced and sophisticated technologies, such as artificial intelligence (AI), mixed-reality (MR), and user generated content (UGC) are increasingly informing athletic research and performance analysis.

Whichever programme you choose on this pathway, our extensive network of employer partnerships means that you will get practical experience in using the latest techniques and research throughout your time studying with us. You will combine the study of anatomy, physiology, and psychology with cutting-edge research in biometrics, exercise, health, and lifestyle. You will also have access to the facilities at Oxford Brookes University and have opportunities to get involved in rowing and rugby programmes.

Building fitness, strengthening communities

The sport and physical activity industries contribute £39 billion to the UK's economy and a significant portion of this comes from grassroots sport: the millions of people who buy trainers, bikes, gym memberships or pay match fees. The sector boosts the economy in two ways: directly, through job creation, and indirectly, by reducing healthcare costs due to a healthier population, and reducing crime. We work closely with sports providers in our local areas to give you the opportunity to learn how to be an approachable and effective motivator; encouraging people to reach their fitness goals, creating personalised exercise programmes, giving advice on healthy living, and carrying out fitness assessments.

Choose your route into Sports Industry in 2022-23 from the following Higher Education programmes accredited by Oxford Brookes University:

**OXFORD
BROOKES
UNIVERSITY**

- Foundation Degree (FdSc) and Bachelor of Science (Hons) (Top-up) in Sports Coaching, Fitness and Rehabilitation.

A CAREER IN SPORTS COACHING, FITNESS AND REHABILITATION



As of 2021,
there are over

300,000

people employed in the UK
in sports-related job roles

SPORTS COACHING FITNESS AND REHABILITATION

Foundation Degree (FdSc) in Sports Coaching, Fitness and Rehabilitation

Campus: City of Oxford

Awarding University Partner:
Oxford Brookes University

FT

This programme is designed to prepare you for a career in the sports industry. It aims to assist in developing knowledge and understanding of coaching fitness and rehabilitation through work experience and other underpinning features, such as physiology, principles of fitness, coaching theory, and practical experience of rehabilitation. Application of theory to practical situations within a sports context is a key aspect of this programme featuring strongly in the work experience module, which awards academic credit.

In addition to the foundation degree, students will have the opportunity to complete additional qualifications including fitness instruction, personal training, sports massage, sports injuries and sport coaching.

Concentrating on the three key disciplines of sports coaching, fitness and rehabilitation, the programme recognises the need for an interdisciplinary approach to help maximise future employment potential and will help you develop and sustain a career in the field.

Course modules shown are indicative only and may be subject to change.

Bachelor of Science (BSc Hons) (Top-up) in Sports Coaching, Fitness and Rehabilitation

Campus: City of Oxford

Awarding University Partner:
Oxford Brookes University

FT

The BSc in Sports Coaching, Fitness and Rehabilitation is designed to prepare students for a career in sport and recognises the need for an interdisciplinary approach to help maximise future employment.

Concentrating on the three key disciplines of sports coaching, fitness and rehabilitation, the programme will enable students to develop and sustain a career in the field or go onto specialise in postgraduate study.

OXFORD
BROOKES
UNIVERSITY



PRACTICAL LECTURES, CONTENT AND DELIVERY ARE PARTICULARLY GOOD

Anonymous student

BSc Sports Coaching, Fitness and Rehabilitation
2019/20 Internal student satisfaction survey



HOW TO APPLY

See course codes in table on pages 9-12

FT Via www.UCAS.com

A CAREER IN TEACHING

As of 2021, there are 1.58 million teaching jobs at all levels in the UK, with a further 59,000 openings every year. Furthermore, there is 1.4% growth projected between now and 2027, so you can be confident that an engaging and fulfilling career awaits you upon graduation!

Teaching career options span several age groups from nursery, to primary and secondary to further and higher education. A career in teaching is rewarding and means that you could make a positive contribution to people's lives and society as a whole.

An adaptable education to help you

Whether you're starting out in teaching, returning to work after a break or making a career change, we offer flexible, effective, and local routes into teaching.

If you're an experienced practitioner working in a primary school or a registered Early Years setting with children from birth to 11-years old and you wish to achieve a degree, or further your career in teaching, the Foundation Degree in Children's Development and Learning will support you towards this goal.

Or you can prepare to teach in the post-compulsory sector with our PGCE programme, awarded by Oxford Brookes University. A PGCE can lead to qualified teacher status (QTS).

Choose from the following Higher Education programmes accredited by the University of Reading or Oxford Brookes University and find your route into Teaching in 2022–23:

- ▶ Foundation Degree (FdA) in Educational Practice (Oxford Brookes University).
- ▶ Foundation Degree (FdEd) in Children's Development and Learning (University of Reading).
- ▶ Bachelor of Arts (Hons) (Top-up) in Education and Lifelong Learning (Oxford Brookes University).
- ▶ Professional/Post Graduate Certificate in Education (PGCE) (Oxford Brookes University).

Activate Learning also offers a Level 5 Diploma in Education and Training which forms part of an apprenticeship programme approved by Ascentis. If you'd like to know more information on teaching apprenticeships, please call 01865 551015 or email hello@activateapprenticeships.co.uk



TEACHING

FdEd in Children's Development and Learning

Campus: Bracknell and Merrist Wood

Awarding University Partner:
University of Reading

*FT

The programme provides an ideal opportunity to study for a degree alongside working with children. The programme is work-based and lessons and assessments are all designed to benefit your professional development. You will be able to build on your experience through modules in areas such as working in partnership with parents, how children develop and learn, and inclusive and diverse practice.



Foundation Degree (FdA) in Educational Practice

Campus: City of Oxford

Awarding University Partner:
Oxford Brookes University

FT

This programme aims to produce highly-skilled and well-qualified Teaching Assistants, capable of supporting teaching and learning within a variety of contexts.

Building on the Professional Practice Framework for Teaching Assistants and on Oxford Brookes' considerable success in providing Higher Education for mature students, this course is aimed at Teaching Assistants working in primary, secondary and tertiary education.

In the first year, students are taught to develop an understanding of how individuals learn, in particular, in the subjects of English and mathematics.

In the second year, wider education issues such as reflective practice and mentoring are taught.



Bachelor of Arts (BA Hons) (Top-up) in Education and Lifelong Learning

Campus: City of Oxford

Awarding University Partner:
Oxford Brookes University

FT

This programme offers a range of subjects aimed at the caring professions and educational practice sector. Through this qualification, you will be able to enhance your professional practice, which will provide opportunities for career development.



Professional or Postgraduate Certificate of Education (PGCE)

Campus: City of Oxford, Reading

Awarding University Partner:
Oxford Brookes University

PT

This is a two-year, part-time programme for people who teach, or want to teach, in the post-compulsory sector (further education, higher education, the health service, adult and community education, the prison service, the armed forces or private training providers). This programme is an excellent development opportunity for a career in teaching or training in a wide range of post-compulsory institutions.

HOW TO APPLY

See course codes in table on pages 9-12

FT Via www.UCAS.com

PT Online at activatelearning.ac.uk/higher

ACCESS TO HIGHER EDUCATION



Not quite ready to study a university-level course?
Invest in yourself with an Access to Higher Education qualification.

Access to HE programmes have been specifically designed for adult learners aged 19 or over who do not currently have the relevant entry requirements to begin higher education. There is no upper age limit, so it doesn't matter if you've been out of education for a period time or wish to return to education to change career.

Access to HE programmes are equal to three A Levels, giving you the UCAS Points you need to apply for university-level study. Programmes will last one year (36 weeks of study), after which you will have the diploma, skills and confidence to study at degree level. Throughout the programme, you will experience a variety of teaching and learning strategies to suit all learning styles.

Although the programme is intensive, it is structured in a way that recognises the pressures on mature learners. Many students successfully balance the programme with

work, family, and childcare commitments. Our friendly team are on hand to support you through your studies as well as any funding, career and learning support you may need.

Don't let fees hold you back as paying for your course might be easier than you think. You could have your loan written off, if you progress to and complete a university-level course, with the 19+ Advanced Learner Loan meaning you will only have to pay back your university student loan.

You may choose to progress on to one of our higher education programmes including Foundation Degrees, BA Honours Degrees and the PGCE. Our programmes are run in conjunction with respected institutions such as Oxford Brookes University and Pearson.

Our Access to Higher Education programmes are accredited by national awarding bodies.



OUR PATHWAYS

We have an exciting range of pathways to choose from to help you progress to university and beyond.

ART

If you have an interest in the creative applications of art and design, you will be able to explore your potential with our specialist programmes and develop a broad range of skills needed to progress to a university-level course.

BUSINESS, ACCOUNTANCY AND LAW

Leading on to degrees in business, finance, law, marketing and human resources, this pathway will allow you to expand your knowledge in key disciplines.

SCIENCE, ENGINEERING AND IT

If you dream of a career in fields relating to science, engineering and IT then our range of programmes could be your ticket to success. You will acquire the knowledge and skills that will enable you to hit the ground running on a related higher education course.

NURSING AND HEALTH

We offer a range of Access to HE programmes in nursing and health professions for those wishing to pursue further study or careers in a variety of allied health professions. This is the fast-track route to the healthcare profession you've always wanted.

SOCIAL SCIENCE

If you're looking to start a career in education, psychology, social work or counselling, our range of programmes will enable you to gain a thorough insight into these sectors and provide you with the skills needed to progress to university.

ANIMAL MANAGEMENT

If you're passionate about working with animals, our range of specialist programmes will allow you to understand the behaviour and welfare of a range of species and enable you to progress to a degree level programme in the animal field.

Activate Learning also continues to offer a growing number of Access to HE online programmes throughout the year across a range of key subject areas including Nursing, Midwifery and Paramedic Science. To view the full list and find out more, go to:

adult.activatelearning.ac.uk/access-to-he



HOW TO APPLY

STEP 1

You've made a decision to advance your learning or plan to return to education to progress your career, or make a change. If you're still not sure then we can support and advise you. Find your local Activate Learning provider and view our courses at activatelearning.ac.uk/our-colleges/

Use the UCAS course finder at www.UCAS.com

Or contact us directly at he@activatelearning.ac.uk

We suggest you attend one of our open or virtual open events to speak to tutors and students to get a feel for the college environment and discuss your options with us. Register for an open event today.

STEP 2

STEP 3

If you are applying for a full-time (FT) programme you will be applying via a UCAS route (with the exception of (FdEd) Children's Development and Learning).

UCAS begins to accept applications from September 2021 with the initial deadline of [26 January 2022]. Please apply via www.ucas.com.

Further guidance on applying through UCAS can be found [here](#).

If you are applying for a part-time (PT) programme you will register your application directly with us, unless otherwise specified. You can download an application form or complete online at activatelearning.ac.uk/higher

STEP 4

The HE Advice and Admissions team will contact you to discuss your application further. For some courses you may be required to undertake an assessment and/or an interview before a formal offer can be made.

STEP 5

Your application will be reviewed and a written confirmation of your interview date and/or assessments will be sent to you and an offer made if you meet requirements on the programme you have chosen.

STEP 6

Start to apply for funding. Student financial support information is detailed on page 69.

STEP 7

If a conditional offer is made, subject to the achievement of certain grades, Activate Learning strictly adheres to UCAS regulations and final confirmation of a place will be on or shortly after results day in August.

STEP 8

When you have secured your place, you will be invited to enrol. You will meet tutors and new friends and begin your course of study. We will continue to support you to gain the qualification you

need and to get the most out of your higher education learning experience.

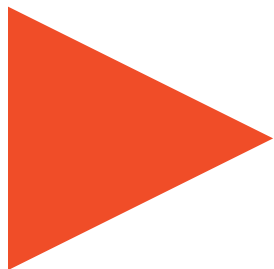
Whilst every effort has been made to ensure the information is correct at time of printing our course programmes and delivery methods may be subject to change. Please check the website for latest information.



MONEY

MATTERS

FUNDING YOUR FUTURE



Studying a university-level qualification is a significant investment in your future. We understand the importance of ensuring you are making the correct decision and we are committed to supporting you throughout your time with us.

FEES

To study on a university-level programme you will need to fund your tuition fees, but you are not required to pay everything upfront. You may be able to pay in instalments, or you can apply for a loan to help spread the costs. Our fees are competitive and will vary dependent on the programme and awarding body. The latest fees can be viewed on the individual programme pages.

Please note, tuition fees may increase in subsequent years, both for new and continuing students, in line with an inflationary amount determined by the government.

TUITION FEE LOANS

Student loans are available to cover tuition fees for HNDs, Foundation Degrees or BA (Hons) Degrees, whether you are studying full-time or part-time.

If you're studying full-time, you can take out two student loans per academic year:

- ▶ A tuition fee loan to cover your annual tuition fees in full.
- ▶ A maintenance loan to help with accommodation and other living costs (dependent on your household income).

For more information, please visit www.gov.uk/studentfinance

FEES FOR INTERNATIONAL STUDENTS

If you are not a UK or EU citizen, you will pay international student fees. Call us today on 0800 612 6008 for more information.

ADDITIONAL COSTS

Some of our courses will involve additional costs which are not covered by your tuition fees. These costs are outlined on the programme pages on our website.

STUDENT BURSARIES

We have several bursaries in place, for a limited number of students, that need extra help with meeting the costs of their university-level qualification. For more information, eligibility criteria and how to apply, please visit the 'Money Matters' section of our website or email

he@activatelearning.ac.uk



QUALITY ASSURED

▶ The Quality Assurance Agency for Higher Education (QAA) HE Review (2015) report.

- ▶ "The Group supports students by offering a good experience at initial application and admissions stages and by offering appropriate support to those who need it."
- ▶ "Students are positive with regard to the development of their academic and employability skills through study skills modules and the wide range of opportunities to interact with employees and industry."
- ▶ "Students commented positively on the information and support they receive from the Group."

Professional Body Accreditation in connection with the FdSc in Counselling:



Designated quality body for Higher Education QAA:



OUR PARTNERS

We work with the following partners:



Our animal management, foundation and honours degrees are awarded by Kingston University. Kingston University is ranked in the UK's top 40 in universities according to the 2021 Guardian University Guide.



Oxford Brookes University has over 150 years of history, and has grown into one of the UK's leading modern universities. It enjoys an international reputation for teaching excellence and innovation as well as strong links with business and industry.



Our FdEd Children's Development and Learning is awarded by the University of Reading. The University of Reading has been at the forefront of UK higher education for nearly a century.



Our HNC and HND qualifications are awarded by Pearson, the UK's largest awarding organisation.

OUR LEARNING PHILOSOPHY

Our award-winning Learning Philosophy is at the heart of our approach to teaching and learning. We recognise that not everyone learns in the same way or has had positive experiences of education. We use tried and tested principles to ensure you get the most out of your time with us, setting you up with not only the knowledge you'll need for your career but with personal skills too.

ATTRIBUTES FOR SUCCESS

At Activate Learning, we work closely with employers to identify the characteristics and skills they are looking for in potential employees. We help you identify which of these desirable attributes you have and which you can strengthen throughout your programme, ensuring your future employability is the focus throughout your studies.



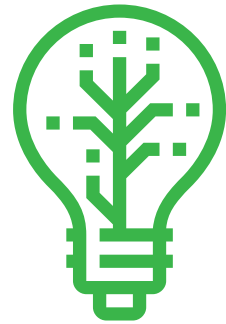
WHY US?

INDIVIDUAL AND
GROUP TUTORIALS

DEDICATED HE
FACILITIES

FULLY INCLUSIVE
HE STUDY
SUPPORT

VOCATIONALLY
FOCUSED



EXPERT
TUTORS WITH
INDUSTRY
EXPERIENCE

UNIVERSITY
VALIDATED
COURSES



6 HIGHER
EDUCATION
LOCATIONS



FLEXIBLE
STUDY
OPTIONS

AND FULL TIME
PART TIME COURSES

WORK EXPERIENCE
OPPORTUNITIES IN THE UK
AND ABROAD



400
ACRE
ESTATE WITH
WOODLANDS,
WETLANDS &
GRASSLANDS

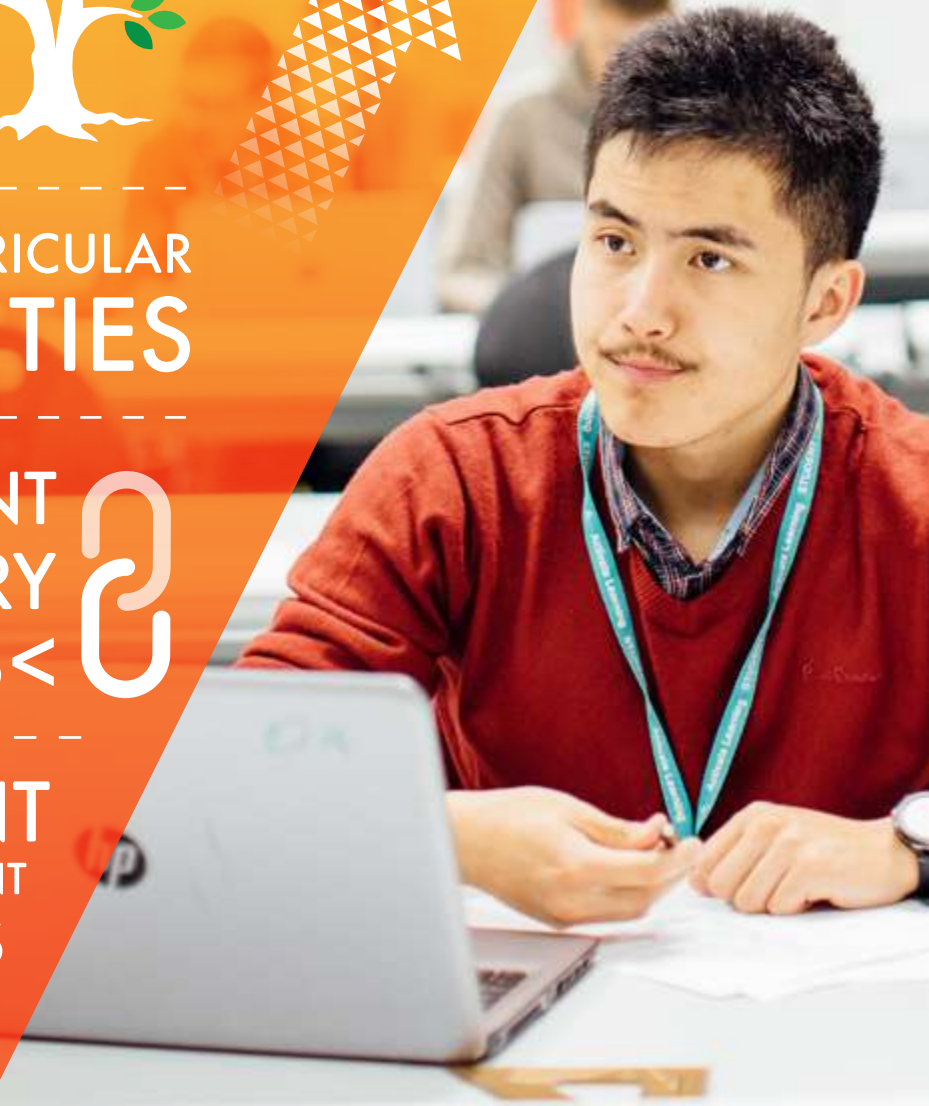


EXTRA CURRICULAR
ACTIVITIES

EXCELLENT
INDUSTRY
>LINKS<



STUDENT
ENHANCEMENT
PROJECTS
(STEPS)





0800 612 6008
HE@activatelearning.ac.uk
activatelearning.ac.uk/higher

 Activatelearn

 @Activate_Learn

 @Activatelearn

 Activate Learning